

MMP2 Rabbit mAb

Catalog No: #59608

Package Size: #59608-1 50ul #59608-2 100ul

Orders: order@signalwayantibody.com

Support: tech@signalwayantibody.com

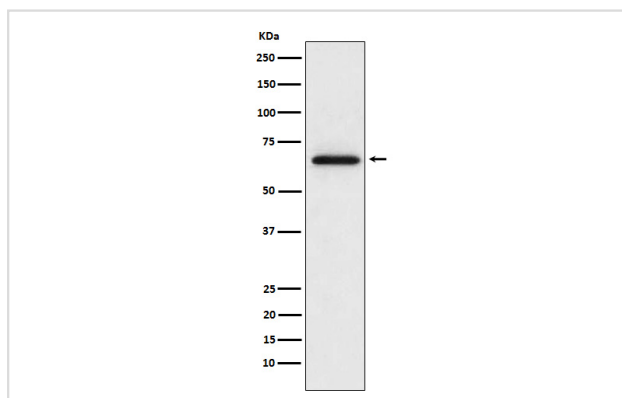
Description

Product Name	MMP2 Rabbit mAb
Host Species	Rabbit
Clonality	Monoclonal
Isotype	Rabbit IgG
Purification	Affinity-chromatography
Applications	WB ICC/IF FC
Species Reactivity	Human Mouse Rat
Specificity	MMP2 Antibody detects endogenous levels of total MMP2
Immunogen Description	A synthesized peptide derived from human MMP2
Other Names	CLG 4; CLG 4A; CLG4; CLG4A; Gelatinase A; Gelatinase alpha; Gelatinase neutrophil; MMP 2; MMP II; MMP2; MONA; PEX; TBE 1;
Accession No.	Uniprot:P08253
Uniprot	P08253
Formulation	Rabbit IgG in phosphate buffered saline , pH 7.4, 150mM NaCl, 0.02% sodium azide and 50% glycerol.
Storage	Store at +4°C short term. Store at -20°C long term. Avoid freeze / thaw cycle.

Application Details

WB 1:500~1:2000 ICC/IF 1:50~1:200 FC 1:100

Images



Western blot analysis of MMP2 expression in L6 cell lysate.

Product Description

Ubiquitous metalloproteinase that is involved in diverse functions such as remodeling of the vasculature, angiogenesis, tissue repair, tumor invasion, inflammation, and atherosclerotic plaque rupture. As well as degrading extracellular matrix proteins, can also act on several nonmatrix proteins such as big endothelial 1 and beta-type CGRP promoting vasoconstriction.

Background

Ubiquitous metalloproteinase that is involved in diverse functions such as remodeling of the vasculature, angiogenesis, tissue repair, tumor invasion, inflammation, and atherosclerotic plaque rupture. As well as degrading extracellular matrix proteins, can also act on several nonmatrix proteins such as big endothelial 1 and beta-type CGRP promoting vasoconstriction.

Note: This product is for in vitro research use only