

Niemann Pick C1 Rabbit mAb

Catalog No: #59610

Package Size: #59610-1 50ul #59610-2 100ul

Orders: order@signalwayantibody.com

Support: tech@signalwayantibody.com

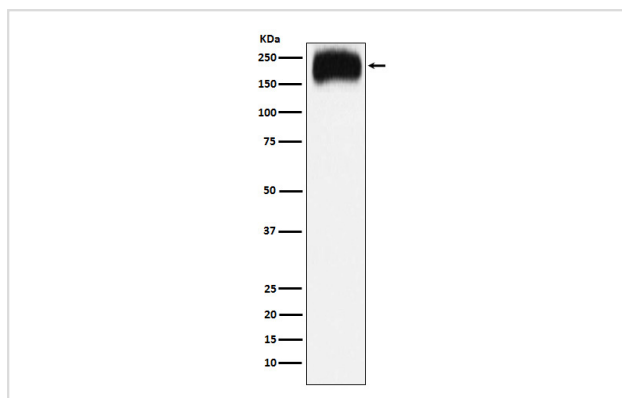
Description

Product Name	Niemann Pick C1 Rabbit mAb
Host Species	Rabbit
Clonality	Monoclonal
Isotype	Rabbit IgG
Purification	Affinity-chromatography
Applications	WB IHC ICC/IF FC
Species Reactivity	Human Mouse Rat
Specificity	Niemann Pick C1 Antibody detects endogenous levels of total Niemann Pick C1
Immunogen Description	A synthesized peptide derived from human Niemann Pick C1
Other Names	Niemann Pick C1 protein precursor; NPC; NPC1;
Accession No.	Uniprot:O15118
Uniprot	O15118
Formulation	Rabbit IgG in phosphate buffered saline , pH 7.4, 150mM NaCl, 0.02% sodium azide and 50% glycerol.
Storage	Store at +4°C short term. Store at -20°C long term. Avoid freeze / thaw cycle.

Application Details

WB 1:500~1:2000 IHC 1:50~1:200 ICC/IF 1:50~1:200 FC 1:100

Images



Western blot analysis of Niemann Pick C1 expression in HepG2 cell lysate.

Product Description

Involved in the intracellular trafficking of cholesterol. May play a role in vesicular trafficking in glia, a process that may be crucial for maintaining the structural and functional integrity of nerve terminals.

Background

Involved in the intracellular trafficking of cholesterol. May play a role in vesicular trafficking in glia, a process that may be crucial for maintaining the structural and functional integrity of nerve terminals.

Note: This product is for in vitro research use only