

KMT5A / SETD8 / Pr-SET7 Rabbit mAb

Catalog No: #59613

Package Size: #59613-1 50ul #59613-2 100ul

Orders: order@signalwayantibody.com

Support: tech@signalwayantibody.com

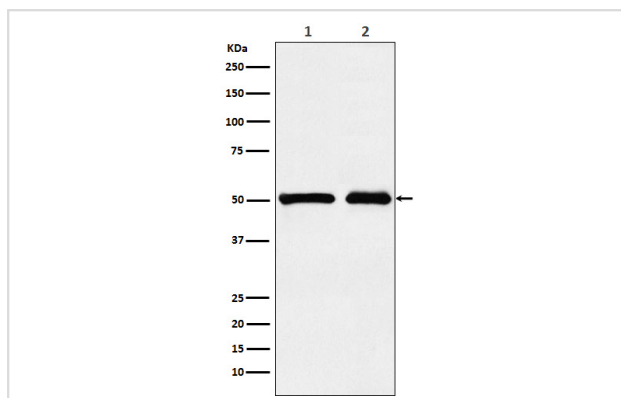
Description

Product Name	KMT5A / SETD8 / Pr-SET7 Rabbit mAb
Host Species	Rabbit
Clonality	Monoclonal
Isotype	Rabbit IgG
Purification	Affinity-chromatography
Applications	WB FC
Species Reactivity	Human Mouse Rat
Specificity	KMT5A / SETD8 / Pr-SET7 Antibody detects endogenous levels of total KMT5A / SETD8 / Pr-SET7
Immunogen Description	A synthesized peptide derived from human KMT5A / SETD8 / Pr-SET7
Other Names	KMT5A;PR-Set7;SET07;SET8;
Accession No.	Uniprot:Q9NQR1
Uniprot	Q9NQR1
Formulation	Rabbit IgG in phosphate buffered saline , pH 7.4, 150mM NaCl, 0.02% sodium azide and 50% glycerol.
Storage	Store at +4°C short term. Store at -20°C long term. Avoid freeze / thaw cycle.

Application Details

WB 1:1000~1:5000 FC 1:100

Images



Western blot analysis of KMT5A / SETD8 / Pr-SET7 expression in (1) 293T cell lysate; (2) NIH/3T3 cell lysate.

Product Description

Protein-lysine N-methyltransferase that monomethylates both histones and non-histone proteins. Specifically monomethylates 'Lys-20' of histone H4 (H4K20me1). H4K20me1 is enriched during mitosis and represents a specific tag for epigenetic transcriptional repression. Mainly functions in euchromatin regions, thereby playing a central role in the silencing of euchromatic genes.

Background

Protein-lysine N-methyltransferase that monomethylates both histones and non-histone proteins. Specifically monomethylates 'Lys-20' of histone H4 (H4K20me1). H4K20me1 is enriched during mitosis and represents a specific tag for epigenetic transcriptional repression. Mainly functions in euchromatin regions, thereby playing a central role in the silencing of euchromatic genes.

Note: This product is for in vitro research use only