

cbx7 Rabbit mAb

Catalog No: #59615

Package Size: #59615-1 50ul #59615-2 100ul

Orders: order@signalwayantibody.com

Support: tech@signalwayantibody.com

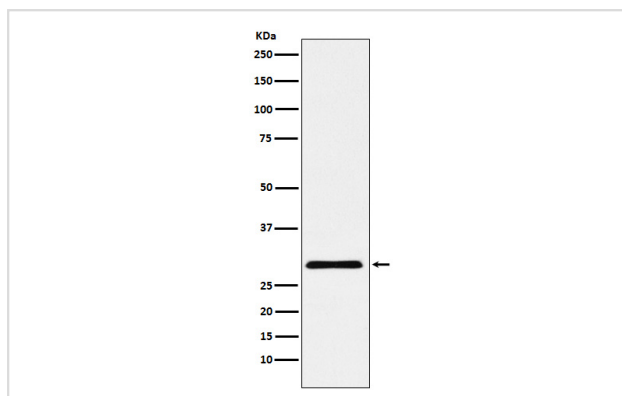
Description

Product Name	cbx7 Rabbit mAb
Host Species	Rabbit
Clonality	Monoclonal
Isotype	Rabbit IgG
Purification	Affinity-chromatography
Applications	WB FC
Species Reactivity	Human
Specificity	cbx7 Antibody detects endogenous levels of total cbx7
Immunogen Description	A synthesized peptide derived from human cbx7
Other Names	CBX7; Chromobox homolog 7;
Accession No.	Uniprot:O95931
Uniprot	O95931
Formulation	Rabbit IgG in phosphate buffered saline , pH 7.4, 150mM NaCl, 0.02% sodium azide and 50% glycerol.
Storage	Store at +4°C short term. Store at -20°C long term. Avoid freeze / thaw cycle.

Application Details

WB 1:500~1:2000 FC 1:50

Images



Western blot analysis of cbx7 expression in HepG2 cell lysate.

Product Description

Control of cell proliferation by Polycomb group proteins (PcG) is an important facet of cellular homeostasis and its disruption can promote tumorigenesis. CBX7 is a novel PcG protein which is found to control the growth of normal cells.

Background

Control of cell proliferation by Polycomb group proteins (PcG) is an important facet of cellular homeostasis and its disruption can promote tumorigenesis. CBX7 is a novel PcG protein which is found to control the growth of normal cells.

Note: This product is for in vitro research use only