

Klotho Rabbit mAb

Catalog No: #59618

Package Size: #59618-1 50ul #59618-2 100ul

Orders: order@signalwayantibody.com

Support: tech@signalwayantibody.com

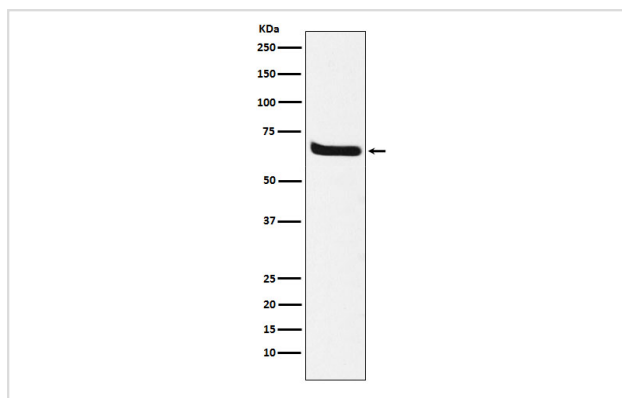
Description

Product Name	Klotho Rabbit mAb
Host Species	Rabbit
Clonality	Monoclonal
Isotype	Rabbit IgG
Purification	Affinity-chromatography
Applications	WB IHC
Species Reactivity	Human Mouse
Specificity	Klotho Antibody detects endogenous levels of total Klotho
Immunogen Description	A synthesized peptide derived from human Klotho
Other Names	KI; Klotho peptide;
Accession No.	Uniprot:Q9UEF7
Uniprot	Q9UEF7
Formulation	Rabbit IgG in phosphate buffered saline , pH 7.4, 150mM NaCl, 0.02% sodium azide and 50% glycerol.
Storage	Store at +4°C short term. Store at -20°C long term. Avoid freeze / thaw cycle.

Application Details

WB 1:500~1:1000 IHC 1:50~1:200

Images



Western blot analysis of Klotho expression in human fetal kidney lysate.

Product Description

May have weak glycosidase activity towards glucuronylated steroids. However, it lacks essential active site Glu residues at positions 239 and 872, suggesting it may be inactive as a glycosidase in vivo. May be involved in the regulation of calcium and phosphorus homeostasis by inhibiting the synthesis of active vitamin D (By similarity).

Background

May have weak glycosidase activity towards glucuronylated steroids. However, it lacks essential active site Glu residues at positions 239 and 872, suggesting it may be inactive as a glycosidase in vivo. May be involved in the regulation of calcium and phosphorus homeostasis by inhibiting the synthesis of active vitamin D (By similarity).

Note: This product is for in vitro research use only