

Estrogen Inducible Protein pS2 Rabbit mAb

Catalog No: #59625

Package Size: #59625-1 50ul #59625-2 100ul

Orders: order@signalwayantibody.com

Support: tech@signalwayantibody.com

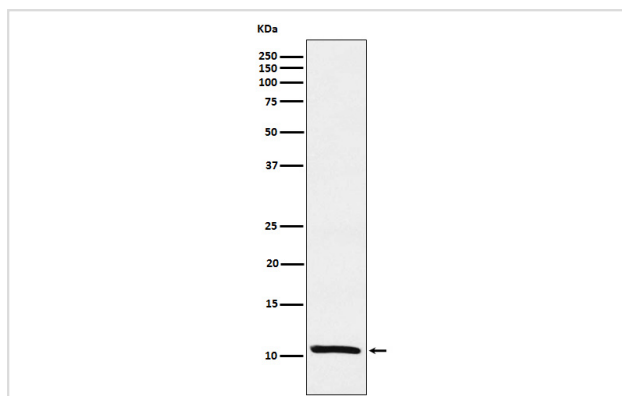
Description

Product Name	Estrogen Inducible Protein pS2 Rabbit mAb
Host Species	Rabbit
Clonality	Monoclonal
Isotype	Rabbit IgG
Purification	Affinity-chromatography
Applications	WB IHC ICC/IF IP FC
Species Reactivity	Human
Specificity	Estrogen Inducible Protein pS2 Antibody detects endogenous levels of total Estrogen Inducible Protein pS2
Immunogen Description	A synthesized peptide derived from human Estrogen Inducible Protein pS2
Other Names	hP1.A; HP1A; HPS2; pNR2; pS2; TFF1;
Accession No.	Uniprot:P04155
Uniprot	P04155
Formulation	Rabbit IgG in phosphate buffered saline , pH 7.4, 150mM NaCl, 0.02% sodium azide and 50% glycerol.
Storage	Store at +4°C short term. Store at -20°C long term. Avoid freeze / thaw cycle.

Application Details

WB 1:500~1:2000 IHC 1:50~1:200 ICC/IF 1:50~1:200 IP 1:50 FC 1:50

Images



Western blot analysis of Estrogen Inducible Protein pS2 expression in MCF-7 cell lysate.

Product Description

Stabilizer of the mucous gel overlying the gastrointestinal mucosa that provides a physical barrier against various noxious agents. May inhibit the growth of calcium oxalate crystals in urine.

Background

Stabilizer of the mucous gel overlying the gastrointestinal mucosa that provides a physical barrier against various noxious agents. May inhibit the growth of calcium oxalate crystals in urine.

Note: This product is for in vitro research use only