

## MCM5 Rabbit mAb

Catalog No: #59626

Package Size: #59626-1 50ul #59626-2 100ul

Orders: order@signalwayantibody.com

Support: tech@signalwayantibody.com

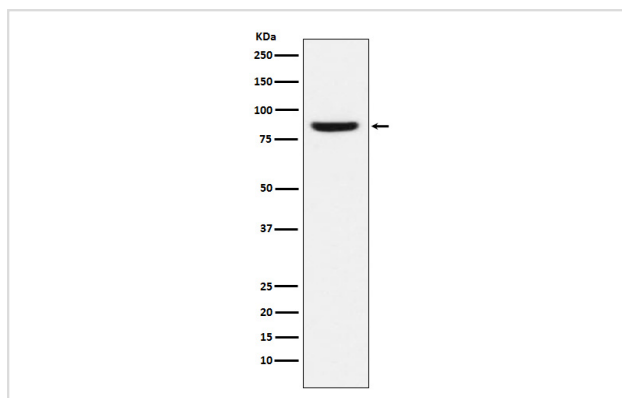
## Description

Product Name	MCM5 Rabbit mAb
Host Species	Rabbit
Clonality	Monoclonal
Isotype	Rabbit IgG
Purification	Affinity-chromatography
Applications	WB IHC ICC/IF IP FC
Species Reactivity	Human Mouse
Specificity	MCM5 Antibody detects endogenous levels of total MCM5
Immunogen Description	A synthesized peptide derived from human MCM5
Other Names	CDC46; MCM5; MGC5315; P1 CDC46;
Accession No.	Uniprot:P33992
Uniprot	P33992
Formulation	Rabbit IgG in phosphate buffered saline , pH 7.4, 150mM NaCl, 0.02% sodium azide and 50% glycerol.
Storage	Store at +4°C short term. Store at -20°C long term. Avoid freeze / thaw cycle.

## Application Details

WB 1:500~1:2000 IHC 1:50~1:200 ICC/IF 1:50~1:200 IP 1:50 FC 1:50

## Images



Western blot analysis of MCM5 expression in MCF-7 cell lysate.

## Product Description

MCM5 Belongs to the MCM family.

## Background

MCM5 Belongs to the MCM family.

---

Note: This product is for in vitro research use only