

STIP1 Rabbit mAb

Catalog No: #59630

Package Size: #59630-1 50ul #59630-2 100ul

Orders: order@signalwayantibody.com

Support: tech@signalwayantibody.com

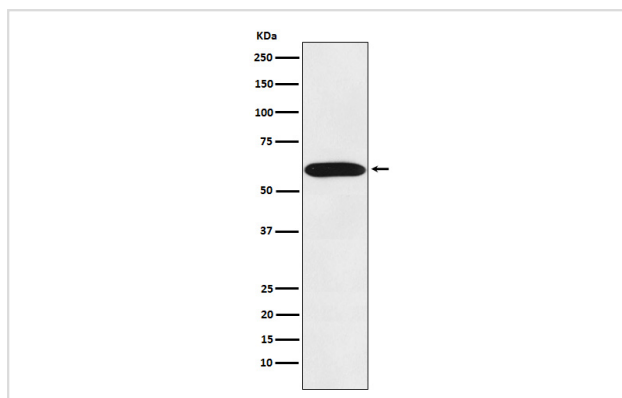
Description

Product Name	STIP1 Rabbit mAb
Host Species	Rabbit
Clonality	Monoclonal
Isotype	Rabbit IgG
Purification	Affinity-chromatography
Applications	WB IHC ICC/IF IP FC
Species Reactivity	Human Mouse Rat
Specificity	STIP1 Antibody detects endogenous levels of total STIP1
Immunogen Description	A synthesized peptide derived from human STIP1
Other Names	Hop; P60; STI1; STI1L; STIP1; Stress induced phosphoprotein 1;
Accession No.	Uniprot:P31948
Uniprot	P31948
Formulation	Rabbit IgG in phosphate buffered saline , pH 7.4, 150mM NaCl, 0.02% sodium azide and 50% glycerol.
Storage	Store at +4°C short term. Store at -20°C long term. Avoid freeze / thaw cycle.

Application Details

WB 1:1000~1:5000 IHC 1:50~1:200 ICC/IF 1:50~1:200 IP 1:50 FC 1:80

Images



Western blot analysis of STIP1 expression in Jurkat cell lysate.

Product Description

Mediates the association of the molecular chaperones HSC70 and HSP90 (HSPCA and HSPCB).

Background

Mediates the association of the molecular chaperones HSC70 and HSP90 (HSPCA and HSPCB).

Note: This product is for in vitro research use only