

## Cullin 3 Rabbit mAb

Catalog No: #59632

Package Size: #59632-1 50ul #59632-2 100ul

Orders: order@signalwayantibody.com

Support: tech@signalwayantibody.com

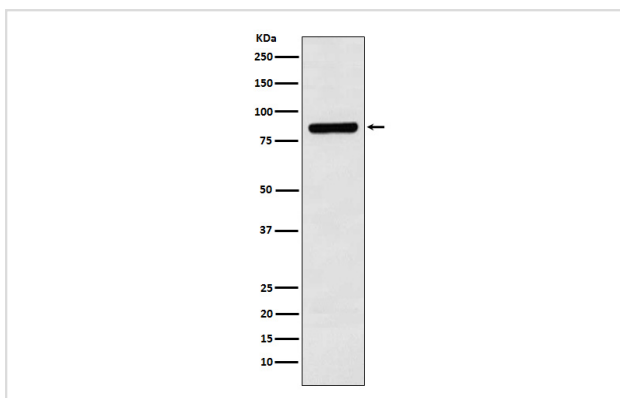
## Description

Product Name	Cullin 3 Rabbit mAb
Host Species	Rabbit
Clonality	Monoclonal
Isotype	Rabbit IgG
Purification	Affinity-chromatography
Applications	WB IP FC
Species Reactivity	Human Mouse Rat
Specificity	Cullin 3 Antibody detects endogenous levels of total Cullin 3
Immunogen Description	A synthesized peptide derived from human Cullin 3
Other Names	cul3; Cullin3; PHA2E;
Accession No.	Uniprot:Q13618
Uniprot	Q13618
Formulation	Rabbit IgG in phosphate buffered saline , pH 7.4, 150mM NaCl, 0.02% sodium azide and 50% glycerol.
Storage	Store at +4°C short term. Store at -20°C long term. Avoid freeze / thaw cycle.

## Application Details

WB 1:1000~1:5000 IP 1:50 FC 1:60

## Images



Western blot analysis of Cullin 3 expression in SH-SY5Y cell lysate.

## Product Description

Core component of multiple cullin-RING-based BCR (BTB-CUL3-RBX1) E3 ubiquitin-protein ligase complexes which mediate the ubiquitination and subsequent proteasomal degradation of target proteins. As a scaffold protein may contribute to catalysis through positioning of the substrate and the ubiquitin-conjugating enzyme.

## Background

---

Core component of multiple cullin-RING-based BCR (BTB-CUL3-RBX1) E3 ubiquitin-protein ligase complexes which mediate the ubiquitination and subsequent proteasomal degradation of target proteins. As a scaffold protein may contribute to catalysis through positioning of the substrate and the ubiquitin-conjugating enzyme.

---

Note: This product is for in vitro research use only