

RRM2 Rabbit mAb

Catalog No: #59643

Package Size: #59643-1 50ul #59643-2 100ul

Orders: order@signalwayantibody.comSupport: tech@signalwayantibody.com

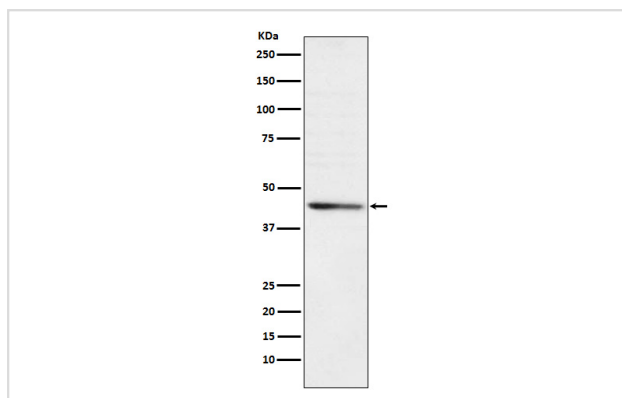
Description

| | |
|-----------------------|--|
| Product Name | RRM2 Rabbit mAb |
| Host Species | Rabbit |
| Clonality | Monoclonal |
| Isotype | Rabbit IgG |
| Purification | Affinity-chromatography |
| Applications | WB ICC/IF IP |
| Species Reactivity | Human |
| Specificity | RRM2 Antibody detects endogenous levels of total RRM2 |
| Immunogen Description | A synthesized peptide derived from human RRM2 |
| Other Names | R2;RR2M; |
| Accession No. | Uniprot:P31350 |
| Uniprot | P31350 |
| Formulation | Rabbit IgG in phosphate buffered saline , pH 7.4, 150mM NaCl, 0.02% sodium azide and 50% glycerol. |
| Storage | Store at +4°C short term. Store at -20°C long term. Avoid freeze / thaw cycle. |

Application Details

WB 1:500~1:2000 ICC/IF 1:50~1:200 IP 1:50

Images



Western blot analysis of RRM2 expression in HeLa cell lysate.

Product Description

Provides the precursors necessary for DNA synthesis. Catalyzes the biosynthesis of deoxyribonucleotides from the corresponding ribonucleotides. Inhibits Wnt signaling.

Background

Provides the precursors necessary for DNA synthesis. Catalyzes the biosynthesis of deoxyribonucleotides from the corresponding ribonucleotides.
Inhibits Wnt signaling.

Note: This product is for in vitro research use only