

## KPNA2 Rabbit mAb

Catalog No: #59644

Package Size: #59644-1 50ul #59644-2 100ul

Orders: order@signalwayantibody.com

Support: tech@signalwayantibody.com

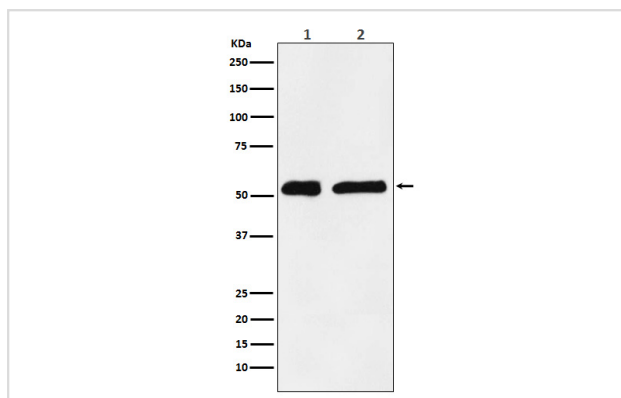
## Description

Product Name	KPNA2 Rabbit mAb
Host Species	Rabbit
Clonality	Monoclonal
Isotype	Rabbit IgG
Purification	Affinity-chromatography
Applications	WB FC
Species Reactivity	Human Mouse Rat
Specificity	KPNA2 Antibody detects endogenous levels of total KPNA2
Immunogen Description	A synthesized peptide derived from human KPNA2
Other Names	QIP2; RCH1; IPOA1; SRP1alpha;
Accession No.	Uniprot:P52292
Uniprot	P52292
Formulation	Rabbit IgG in phosphate buffered saline , pH 7.4, 150mM NaCl, 0.02% sodium azide and 50% glycerol.
Storage	Store at +4°C short term. Store at -20°C long term. Avoid freeze / thaw cycle.

## Application Details

WB 1:1000~1:5000 FC 1:50

## Images



Western blot analysis of KPNA2 expression in (1) HeLa cell lysate; (2) C6 cell lysate.

## Product Description

Functions in nuclear protein import as an adapter protein for nuclear receptor KPNA1. Binds specifically and directly to substrates containing either a simple or bipartite NLS motif.

## Background

---

Functions in nuclear protein import as an adapter protein for nuclear receptor KPNB1. Binds specifically and directly to substrates containing either a simple or bipartite NLS motif.

---

Note: This product is for in vitro research use only