

MELK Rabbit mAb

Catalog No: #59651

Package Size: #59651-1 50ul #59651-2 100ul

Orders: order@signalwayantibody.com

Support: tech@signalwayantibody.com

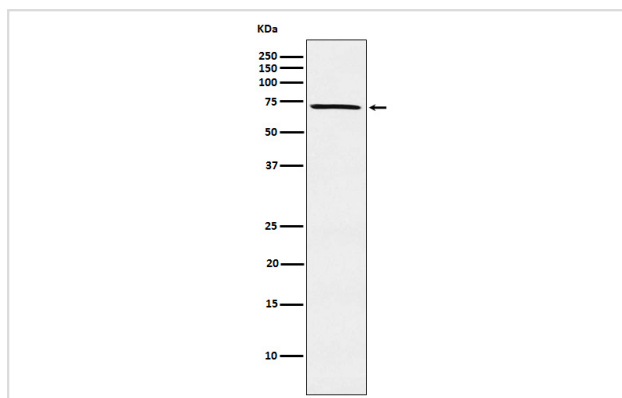
Description

Product Name	MELK Rabbit mAb
Host Species	Rabbit
Clonality	Monoclonal
Isotype	Rabbit IgG
Purification	Affinity-chromatography
Applications	WB
Species Reactivity	Human
Specificity	MELK Antibody detects endogenous levels of total MELK
Immunogen Description	A synthesized peptide derived from human MELK
Other Names	hMELK; hPK38; MELK; mKIAA0175; MPK38;
Accession No.	Uniprot:Q14680
Uniprot	Q14680
Formulation	Rabbit IgG in phosphate buffered saline , pH 7.4, 150mM NaCl, 0.02% sodium azide and 50% glycerol.
Storage	Store at +4°C short term. Store at -20°C long term. Avoid freeze / thaw cycle.

Application Details

WB 1:500~1:2000

Images



Western blot analysis of MELK expression in K562 cell lysate.

Product Description

Phosphorylates ZNF622 and may contribute to its redirection to the nucleus. May be involved in the inhibition of spliceosome assembly during mitosis.

Background

Phosphorylates ZNF622 and may contribute to its redirection to the nucleus. May be involved in the inhibition of spliceosome assembly during mitosis.

Note: This product is for in vitro research use only