

ATM Rabbit mAb

Catalog No: #59656

Package Size: #59656-1 50ul #59656-2 100ul

Orders: order@signalwayantibody.com

Support: tech@signalwayantibody.com

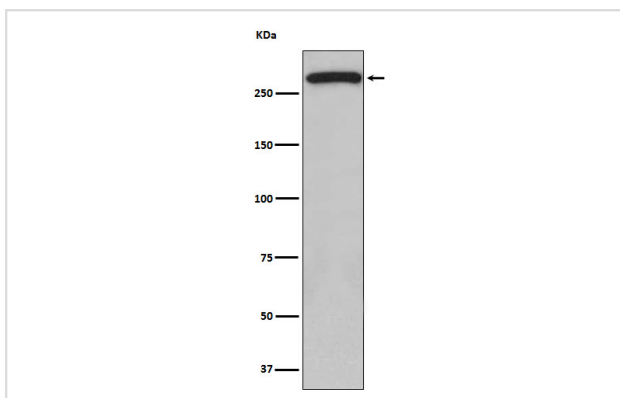
Description

Product Name	ATM Rabbit mAb
Host Species	Rabbit
Clonality	Monoclonal
Isotype	Rabbit IgG
Purification	Affinity-chromatography
Applications	WB ICC/IF IP FC
Species Reactivity	Human Mouse Rat
Specificity	ATM Antibody detects endogenous levels of total ATM
Immunogen Description	A synthesized peptide derived from human ATM
Other Names	AT1; ATA; ATC; ATD; ATDC; ATE; ATM; Tefu; TEL1; TELO1;
Accession No.	Uniprot:Q13315
Uniprot	Q13315
Formulation	Rabbit IgG in phosphate buffered saline , pH 7.4, 150mM NaCl, 0.02% sodium azide and 50% glycerol.
Storage	Store at +4°C short term. Store at -20°C long term. Avoid freeze / thaw cycle.

Application Details

WB 1:500~1:2000 ICC/IF 1:50~1:200 IP 1:80 FC 1:100

Images



Western blot analysis of ATM expression in 293 cell lysate.

Product Description

Serine/threonine protein kinase which activates checkpoint signaling upon double strand breaks (DSBs), apoptosis and genotoxic stresses such as ionizing ultraviolet A light (UVA), thereby acting as a DNA damage sensor.

Background

Serine/threonine protein kinase which activates checkpoint signaling upon double strand breaks (DSBs), apoptosis and genotoxic stresses such as ionizing ultraviolet A light (UVA), thereby acting as a DNA damage sensor.

Note: This product is for in vitro research use only