

## CRMP1 Rabbit mAb

Catalog No: #59662

Package Size: #59662-1 50ul #59662-2 100ul

Orders: order@signalwayantibody.com

Support: tech@signalwayantibody.com

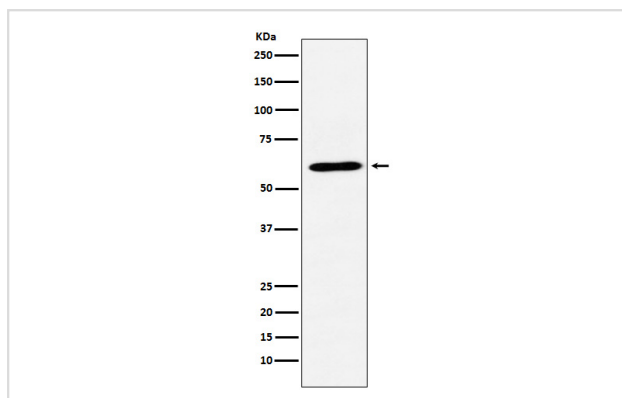
## Description

Product Name	CRMP1 Rabbit mAb
Host Species	Rabbit
Clonality	Monoclonal
Isotype	Rabbit IgG
Purification	Affinity-chromatography
Applications	WB IHC ICC/IF IP FC
Species Reactivity	Human Mouse Rat
Specificity	CRMP1 Antibody detects endogenous levels of total CRMP1
Immunogen Description	A synthesized peptide derived from human CRMP1
Other Names	CRMP 1; Crmp1; DPYSL1; DRP1; ULIP-3; Ulip3;
Accession No.	Uniprot:Q14194
Uniprot	Q14194
Formulation	Rabbit IgG in phosphate buffered saline , pH 7.4, 150mM NaCl, 0.02% sodium azide and 50% glycerol.
Storage	Store at +4°C short term. Store at -20°C long term. Avoid freeze / thaw cycle.

## Application Details

WB 1:500~1:1000 IHC 1:50~1:200 ICC/IF 1:50~1:200 IP 1:40 FC 1:30

## Images



Western blot analysis of CRMP1 expression in SH-SY5Y cell lysate.

## Product Description

Necessary for signaling by class 3 semaphorins and subsequent remodeling of the cytoskeleton. Plays a role in axon guidance, invasive growth and cell migration.

## Background

---

Necessary for signaling by class 3 semaphorins and subsequent remodeling of the cytoskeleton. Plays a role in axon guidance, invasive growth and cell migration.

---

Note: This product is for in vitro research use only