

Protein Kinase D2 Rabbit mAb

Catalog No: #59663

Package Size: #59663-1 50ul #59663-2 100ul

Orders: order@signalwayantibody.com

Support: tech@signalwayantibody.com

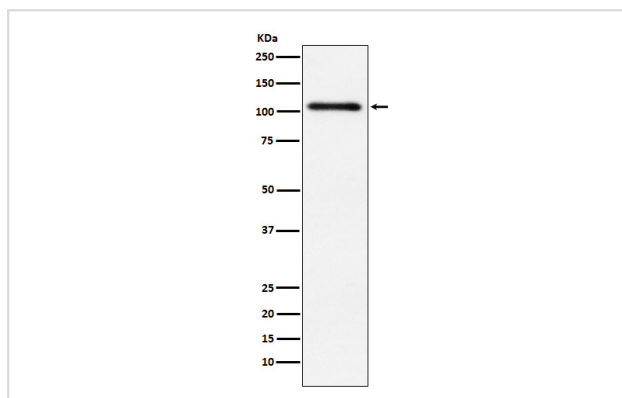
Description

Product Name	Protein Kinase D2 Rabbit mAb
Host Species	Rabbit
Clonality	Monoclonal
Isotype	Rabbit IgG
Purification	Affinity-chromatography
Applications	WB IHC ICC/IF FC
Species Reactivity	Human Mouse
Specificity	Protein Kinase D2 Antibody detects endogenous levels of total Protein Kinase D2
Immunogen Description	A synthesized peptide derived from human Protein Kinase D2
Other Names	HSPC187; nPKC D2; nPKC-D2; PKD2; PRKD 2; Prkd2;
Accession No.	Uniprot:Q9BZL6
Uniprot	Q9BZL6
Formulation	Rabbit IgG in phosphate buffered saline , pH 7.4, 150mM NaCl, 0.02% sodium azide and 50% glycerol.
Storage	Store at +4°C short term. Store at -20°C long term. Avoid freeze / thaw cycle.

Application Details

WB 1:500~1:1000 IHC 1:50~1:200 ICC/IF 1:50~1:200 FC 1:30

Images



Western blot analysis of Protein Kinase D2 expression in HeLa cell lysate.

Product Description

Converts transient diacylglycerol (DAG) signals into prolonged physiological effects, downstream of PKC. Involved in resistance to oxidative stress.

Background

Converts transient diacylglycerol (DAG) signals into prolonged physiological effects, downstream of PKC. Involved in resistance to oxidative stress.

Note: This product is for in vitro research use only