

## Endo G Rabbit mAb

Catalog No: #59664

Package Size: #59664-1 50ul #59664-2 100ul

Orders: order@signalwayantibody.com

Support: tech@signalwayantibody.com

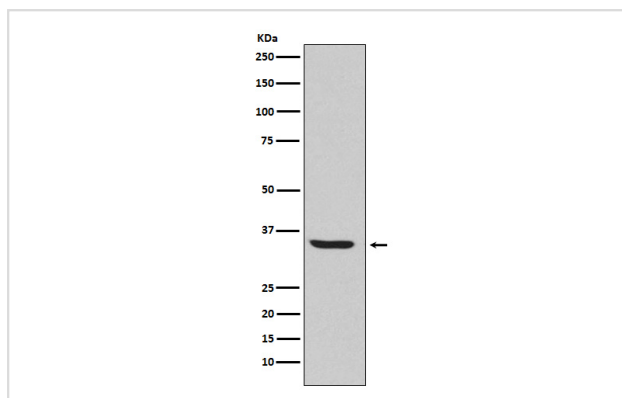
## Description

Product Name	Endo G Rabbit mAb
Host Species	Rabbit
Clonality	Monoclonal
Isotype	Rabbit IgG
Purification	Affinity-chromatography
Applications	WB
Species Reactivity	Human Mouse Rat
Specificity	Endo G Antibody detects endogenous levels of total Endo G
Immunogen Description	A synthesized peptide derived from human Endo G
Other Names	EndoG; EndonucleaseG; Mitochondrial endonuclease G; NUCG_HUMAN;
Accession No.	Uniprot:Q14249
Uniprot	Q14249
Formulation	Rabbit IgG in phosphate buffered saline , pH 7.4, 150mM NaCl, 0.02% sodium azide and 50% glycerol.
Storage	Store at +4°C short term. Store at -20°C long term. Avoid freeze / thaw cycle.

## Application Details

WB 1:500~1:2000

## Images



Western blot analysis of Endo G expression in HepG2 cell lysate.

## Product Description

Endo G is a nuclear encoded endonuclease that is localized in the mitochondrion. The encoded protein cleaves DNA at GC tracts. It is capable of generating the RNA primers required by DNA polymerase gamma to initiate replication of mitochondrial DNA.

## Background

---

Endo G is a nuclear encoded endonuclease that is localized in the mitochondrion. The encoded protein cleaves DNA at GC tracts. It is capable of generating the RNA primers required by DNA polymerase gamma to initiate replication of mitochondrial DNA.

---

Note: This product is for in vitro research use only