

# Presenilin 1 Rabbit mAb

Catalog No: #59665

Package Size: #59665-1 50ul #59665-2 100ul

Orders: order@signalwayantibody.com

Support: tech@signalwayantibody.com

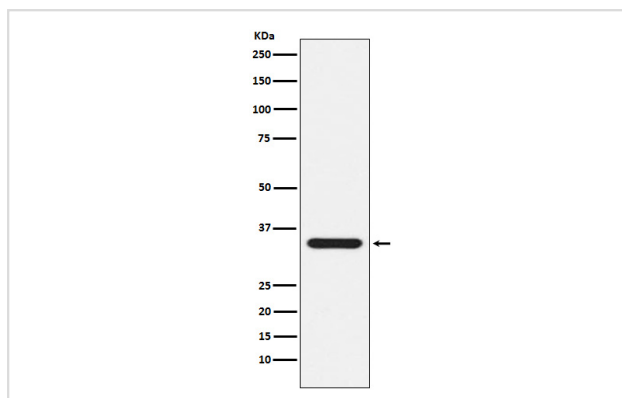
## Description

Product Name	Presenilin 1 Rabbit mAb
Host Species	Rabbit
Clonality	Monoclonal
Isotype	Rabbit IgG
Purification	Affinity-chromatography
Applications	WB FC
Species Reactivity	Human Mouse Rat
Specificity	Presenilin 1 Antibody detects endogenous levels of total Presenilin 1
Immunogen Description	A synthesized peptide derived from human Presenilin 1
Other Names	AD3; Ad3h; FAD; Protein S182; PS1-CTF12; PSEN1; PSNL1; S182;
Accession No.	Uniprot:P49768
Uniprot	P49768
Formulation	Rabbit IgG in phosphate buffered saline , pH 7.4, 150mM NaCl, 0.02% sodium azide and 50% glycerol.
Storage	Store at +4°C short term. Store at -20°C long term. Avoid freeze / thaw cycle.

## Application Details

WB 1:500~1:2000 FC 1:10

## Images



Western blot analysis of Presenilin 1 expression in Jurkat cell lysate.

## Product Description

Probable catalytic subunit of the gamma-secretase complex, an endoprotease complex that catalyzes the intramembrane cleavage of integral membrane proteins such as Notch receptors and APP (beta-amyloid precursor protein). Requires the other members of the gamma-secretase complex to have a protease activity.

## Background

---

Probable catalytic subunit of the gamma-secretase complex, an endoprotease complex that catalyzes the intramembrane cleavage of integral membrane proteins such as Notch receptors and APP (beta-amyloid precursor protein). Requires the other members of the gamma-secretase complex to have a protease activity.

---

Note: This product is for in vitro research use only