

SMURF 2 Rabbit mAb

Catalog No: #59667

Package Size: #59667-1 50ul #59667-2 100ul

Orders: order@signalwayantibody.com

Support: tech@signalwayantibody.com

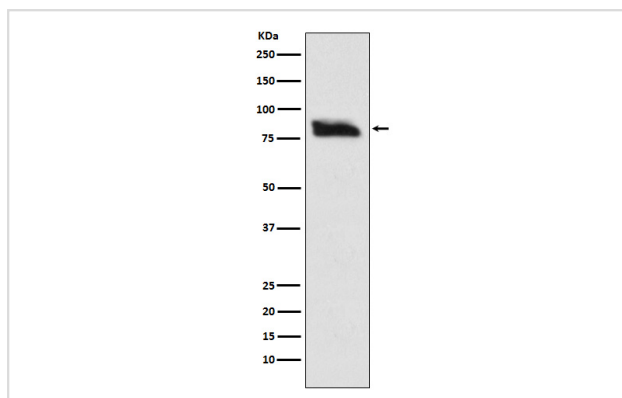
Description

Product Name	SMURF 2 Rabbit mAb
Host Species	Rabbit
Clonality	Monoclonal
Isotype	Rabbit IgG
Purification	Affinity-chromatography
Applications	WB
Species Reactivity	Human Mouse Rat
Specificity	SMURF 2 Antibody detects endogenous levels of total SMURF 2
Immunogen Description	A synthesized peptide derived from human SMURF 2
Other Names	hSMURF2; SMUF2_HUMAN; Smurf2;
Accession No.	Uniprot:Q9HAU4
Uniprot	Q9HAU4
Formulation	Rabbit IgG in phosphate buffered saline , pH 7.4, 150mM NaCl, 0.02% sodium azide and 50% glycerol.
Storage	Store at +4°C short term. Store at -20°C long term. Avoid freeze / thaw cycle.

Application Details

WB 1:500~1:1000

Images



Western blot analysis of SMURF 2 expression in SH-SY-5Y cell lysate.

Product Description

E3 ubiquitin-protein ligase which accepts ubiquitin from an E2 ubiquitin-conjugating enzyme in the form of a thioester and then directly transfers the ubiquitin to targeted substrates. Interacts with SMAD1 and SMAD7 in order to trigger their ubiquitination and proteasome-dependent degradation.

Background

E3 ubiquitin-protein ligase which accepts ubiquitin from an E2 ubiquitin-conjugating enzyme in the form of a thioester and then directly transfers the ubiquitin to targeted substrates. Interacts with SMAD1 and SMAD7 in order to trigger their ubiquitination and proteasome-dependent degradation.

Note: This product is for in vitro research use only