

RPS19 Rabbit mAb

Catalog No: #59674

Package Size: #59674-1 50ul #59674-2 100ul

Orders: order@signalwayantibody.com

Support: tech@signalwayantibody.com

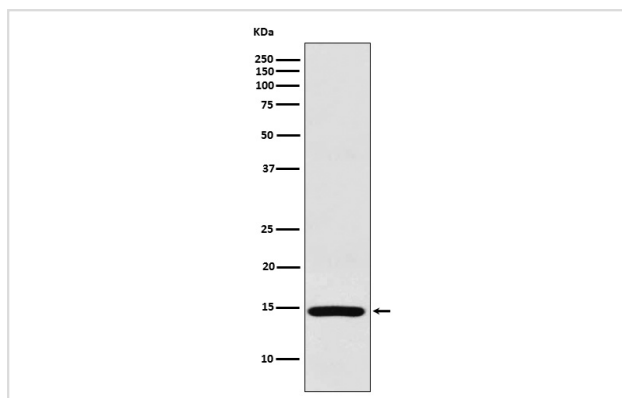
Description

Product Name	RPS19 Rabbit mAb
Host Species	Rabbit
Clonality	Monoclonal
Isotype	Rabbit IgG
Purification	Affinity-chromatography
Applications	WB IHC IP
Species Reactivity	Human Mouse Rat
Specificity	RPS19 Antibody detects endogenous levels of total RPS19
Immunogen Description	A synthesized peptide derived from human RPS19
Other Names	DBA; DBA1; Ribosomal protein S19; rps19; S19;
Accession No.	Uniprot:P39019
Uniprot	P39019
Formulation	Rabbit IgG in phosphate buffered saline , pH 7.4, 150mM NaCl, 0.02% sodium azide and 50% glycerol.
Storage	Store at +4°C short term. Store at -20°C long term. Avoid freeze / thaw cycle.

Application Details

WB 1:500~1:2000 IHC 1:50~1:200 IP 1:50

Images



Western blot analysis of RPS19 expression in HeLa cell lysate.

Product Description

Required for pre-rRNA processing and maturation of 40S ribosomal subunits.

Background

Required for pre-rRNA processing and maturation of 40S ribosomal subunits.

Note: This product is for in vitro research use only