

## Fructose 6 Phosphate Kinase Rabbit mAb

Catalog No: #59679

Package Size: #59679-1 50ul #59679-2 100ul

Orders: order@signalwayantibody.com

Support: tech@signalwayantibody.com

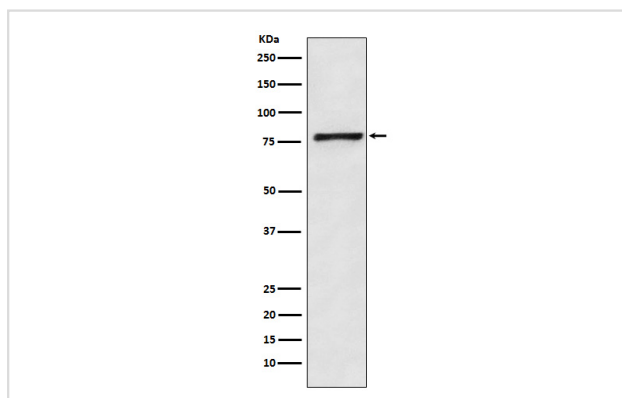
## Description

Product Name	Fructose 6 Phosphate Kinase Rabbit mAb
Host Species	Rabbit
Clonality	Monoclonal
Isotype	Rabbit IgG
Purification	Affinity-chromatography
Applications	WB ICC/IF FC
Species Reactivity	Human Mouse Rat
Specificity	Fructose 6 Phosphate Kinase Antibody detects endogenous levels of total Fructose 6 Phosphate Kinase
Immunogen Description	A synthesized peptide derived from human Fructose 6 Phosphate Kinase
Other Names	GSD7; PFK1; PFKA; PFKX; PFK-1; Phosphohexokinase;
Accession No.	Uniprot:P08237
Uniprot	P08237
Calculated MW	81kDa
Formulation	Rabbit IgG in phosphate buffered saline , pH 7.4, 150mM NaCl, 0.02% sodium azide and 50% glycerol.
Storage	Store at +4°C short term. Store at -20°C long term. Avoid freeze / thaw cycle.

## Application Details

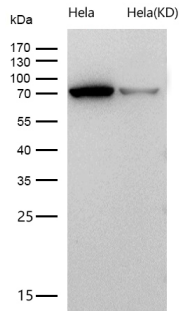
WB 1:500~1:2000 ICC/IF 1:50~1:200 FC 1:100

## Images



Western blot analysis of Fructose 6 Phosphate Kinase expression in HeLa cell lysate.

All lanes use the Antibody at 1:1K dilution for 1 hour at room temperature.



## Product Description

Carbohydrate degradation; glycolysis; D-glyceraldehyde 3-phosphate and glycerone phosphate from D-glucose: step 3/4.

## Background

Carbohydrate degradation; glycolysis; D-glyceraldehyde 3-phosphate and glycerone phosphate from D-glucose: step 3/4.

Note: This product is for in vitro research use only