

PSME1 Rabbit mAb

Catalog No: #59680

Package Size: #59680-1 50ul #59680-2 100ul

Orders: order@signalwayantibody.com

Support: tech@signalwayantibody.com

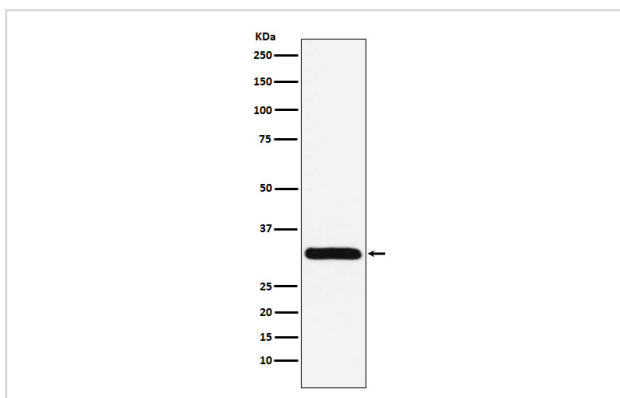
Description

Product Name	PSME1 Rabbit mAb
Host Species	Rabbit
Clonality	Monoclonal
Isotype	Rabbit IgG
Purification	Affinity-chromatography
Applications	WB ICC/IF IP
Species Reactivity	Human Mouse Rat
Specificity	PSME1 Antibody detects endogenous levels of total PSME1
Immunogen Description	A synthesized peptide derived from human PSME1
Other Names	PA28A; IFI5111; REGalpha; PA28alpha;
Accession No.	Uniprot:Q06323
Uniprot	Q06323
Formulation	Rabbit IgG in phosphate buffered saline , pH 7.4, 150mM NaCl, 0.02% sodium azide and 50% glycerol.
Storage	Store at +4°C short term. Store at -20°C long term. Avoid freeze / thaw cycle.

Application Details

WB 1:500~1:2000 ICC/IF 1:50~1:200 IP 1:50

Images



Western blot analysis of PSME1 expression in Jurkat cell lysate.

Product Description

Implicated in immunoproteasome assembly and required for efficient antigen processing. The PA28 activator complex enhances the generation of class I binding peptides by altering the cleavage pattern of the proteasome.

Background

Implicated in immunoproteasome assembly and required for efficient antigen processing. The PA28 activator complex enhances the generation of class I binding peptides by altering the cleavage pattern of the proteasome.

Note: This product is for in vitro research use only