

DEK Rabbit mAb

Catalog No: #59681

Package Size: #59681-1 50ul #59681-2 100ul

Orders: order@signalwayantibody.comSupport: tech@signalwayantibody.com

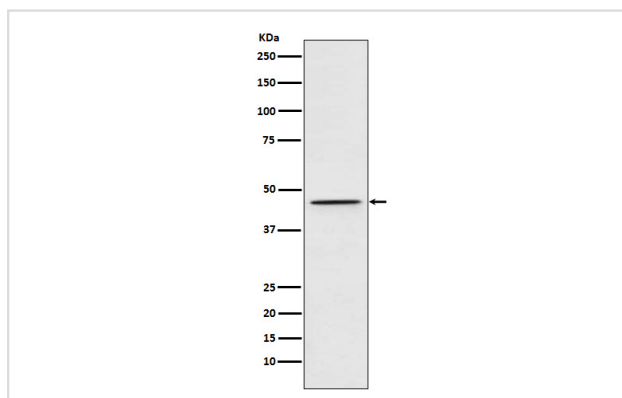
Description

Product Name	DEK Rabbit mAb
Host Species	Rabbit
Clonality	Monoclonal
Isotype	Rabbit IgG
Purification	Affinity-chromatography
Applications	WB IHC ICC/IF IP
Species Reactivity	Human Rat
Specificity	DEK Antibody detects endogenous levels of total DEK
Immunogen Description	A synthesized peptide derived from human DEK
Other Names	Dek; DEK oncogene; Protein DEK;
Accession No.	Uniprot:P35659
Uniprot	P35659
Calculated MW	43kDa
Formulation	Rabbit IgG in phosphate buffered saline , pH 7.4, 150mM NaCl, 0.02% sodium azide and 50% glycerol.
Storage	Store at +4°C short term. Store at -20°C long term. Avoid freeze / thaw cycle.

Application Details

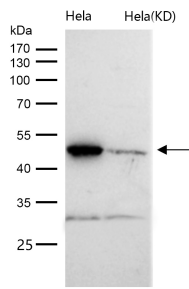
WB 1:500~1:2000 IHC 1:50~1:200 ICC/IF 1:50~1:200 IP 1:50

Images



Western blot analysis of DEK expression in 293T cell lysate.

All lanes use the Antibody at 1:1K dilution for 1 hour at room temperature.



Product Description

Involved in chromatin organization.

Background

Involved in chromatin organization.

Note: This product is for in vitro research use only