

Glucose 6 phosphate isomerase Rabbit mAb

Catalog No: #59684

Package Size: #59684-1 50ul #59684-2 100ul

Orders: order@signalwayantibody.com

Support: tech@signalwayantibody.com

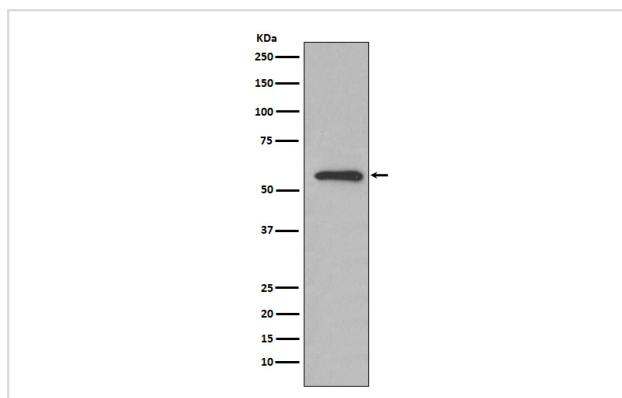
Description

Product Name	Glucose 6 phosphate isomerase Rabbit mAb
Host Species	Rabbit
Clonality	Monoclonal
Isotype	Rabbit IgG
Purification	Affinity-chromatography
Applications	WB IHC ICC/IF FC
Species Reactivity	Human
Specificity	Glucose 6 phosphate isomerase Antibody detects endogenous levels of total Glucose 6 phosphate isomerase
Immunogen Description	A synthesized peptide derived from human Glucose 6 phosphate isomerase
Other Names	AMF; NLK; PGI; PHI; GNPI; SA-36; GPI;
Accession No.	Uniprot:P06744
Uniprot	P06744
Formulation	Rabbit IgG in phosphate buffered saline , pH 7.4, 150mM NaCl, 0.02% sodium azide and 50% glycerol.
Storage	Store at +4°C short term. Store at -20°C long term. Avoid freeze / thaw cycle.

Application Details

WB 1:500~1:2000 IHC 1:50~1:200 ICC/IF 1:50~1:200 FC 1:50

Images



Western blot analysis of Glucose 6 phosphate isomerase expression in HeLa cell lysate.

Product Description

Besides its role as a glycolytic enzyme, mammalian GPI can function as a tumor-secreted cytokine and an angiogenic factor (AMF) that stimulates endothelial cell motility. GPI is also a neurotrophic factor (Neuroleukin) for spinal and sensory neurons.

Background

Besides its role as a glycolytic enzyme, mammalian GPI can function as a tumor-secreted cytokine and an angiogenic factor (AMF) that stimulates endothelial cell motility. GPI is also a neurotrophic factor (Neuroleukin) for spinal and sensory neurons.

Note: This product is for in vitro research use only