

## MEIS2 Rabbit mAb

Catalog No: #59690

Package Size: #59690-1 50ul #59690-2 100ul

Orders: order@signalwayantibody.com

Support: tech@signalwayantibody.com

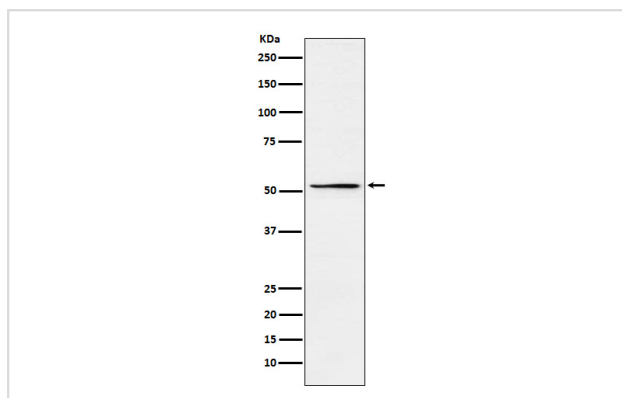
## Description

Product Name	MEIS2 Rabbit mAb
Host Species	Rabbit
Clonality	Monoclonal
Isotype	Rabbit IgG
Purification	Affinity-chromatography
Applications	WB FC
Species Reactivity	Human Mouse Rat
Specificity	MEIS2 Antibody detects endogenous levels of total MEIS2
Immunogen Description	A synthesized peptide derived from human MEIS2
Other Names	Meis homeobox 2; Meis1 related gene 1; MEIS2; MGC2820; MRG1;
Accession No.	Uniprot:O14770
Uniprot	O14770
Formulation	Rabbit IgG in phosphate buffered saline , pH 7.4, 150mM NaCl, 0.02% sodium azide and 50% glycerol.
Storage	Store at +4°C short term. Store at -20°C long term. Avoid freeze / thaw cycle.

## Application Details

WB 1:500~1:2000 FC 1:50

## Images



Western blot analysis of MEIS2 expression in HepG2 cell lysate.

## Product Description

Involved in transcriptional regulation. Binds to HOX or PBX proteins to form dimers, or to a DNA-bound dimer of PBX and HOX proteins and thought to have a role in stabilization of the homeoprotein-DNA complex.

## Background

---

Involved in transcriptional regulation. Binds to HOX or PBX proteins to form dimers, or to a DNA-bound dimer of PBX and HOX proteins and thought to have a role in stabilization of the homeoprotein-DNA complex.

---

Note: This product is for in vitro research use only