

SMARCC1/BAF155 Rabbit mAb

Catalog No: #59699

Package Size: #59699-1 50ul #59699-2 100ul

Orders: order@signalwayantibody.com

Support: tech@signalwayantibody.com

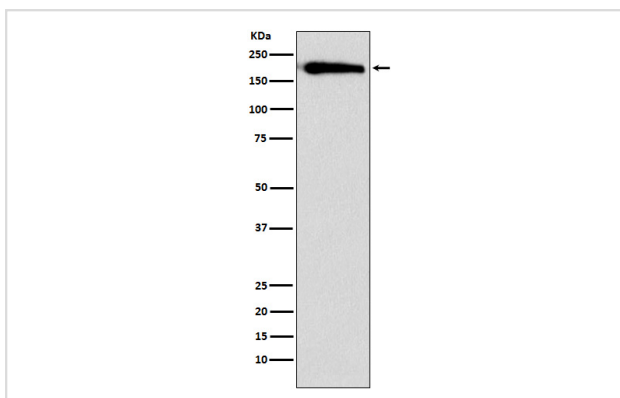
Description

| | |
|-----------------------|--|
| Product Name | SMARCC1/BAF155 Rabbit mAb |
| Host Species | Rabbit |
| Clonality | Monoclonal |
| Isotype | Rabbit IgG |
| Purification | Affinity-chromatography |
| Applications | WB ICC/IF IP FC |
| Species Reactivity | Human Rat |
| Specificity | SMARCC1/BAF155 Antibody detects endogenous levels of total SMARCC1/BAF155 |
| Immunogen Description | A synthesized peptide derived from human SMARCC1/BAF155 |
| Other Names | BAF155; CRACC1; Rsc8; SMARCC1; SRG3; SWI3; |
| Accession No. | Uniprot:Q92922 |
| Uniprot | Q92922 |
| Formulation | Rabbit IgG in phosphate buffered saline , pH 7.4, 150mM NaCl, 0.02% sodium azide and 50% glycerol. |
| Storage | Store at +4°C short term. Store at -20°C long term. Avoid freeze / thaw cycle. |

Application Details

WB 1:500~1:2000 ICC/IF 1:50~1:200 IP 1:50 FC 1:50

Images



Western blot analysis of SMARCC1 expression in HeLa cell lysate.

Product Description

Involved in transcriptional activation and repression of select genes by chromatin remodeling (alteration of DNA-nucleosome topology). May stimulate the ATPase activity of the catalytic subunit of the complex.

Background

Involved in transcriptional activation and repression of select genes by chromatin remodeling (alteration of DNA-nucleosome topology). May stimulate the ATPase activity of the catalytic subunit of the complex.

Note: This product is for in vitro research use only