

DNA Ligase I Rabbit mAb

Catalog No: #59701

Package Size: #59701-1 50ul #59701-2 100ul

Orders: order@signalwayantibody.com

Support: tech@signalwayantibody.com

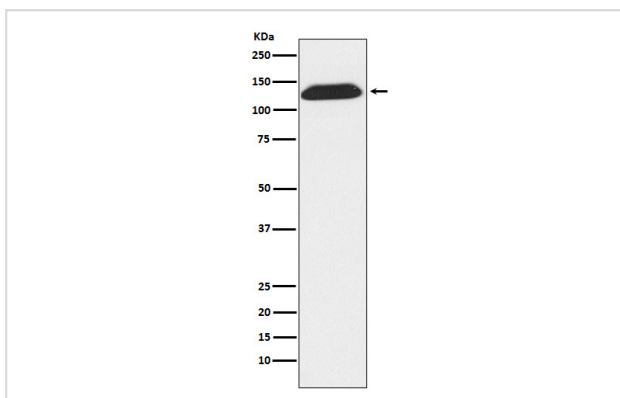
Description

| | |
|-----------------------|--|
| Product Name | DNA Ligase I Rabbit mAb |
| Host Species | Rabbit |
| Clonality | Monoclonal |
| Isotype | Rabbit IgG |
| Purification | Affinity-chromatography |
| Applications | WB IHC ICC/IF |
| Species Reactivity | Human Rat |
| Specificity | DNA Ligase I Antibody detects endogenous levels of total DNA Ligase I |
| Immunogen Description | A synthesized peptide derived from human DNA Ligase I |
| Other Names | DNA ligase 1; DNA ligase I; lig1; |
| Accession No. | Uniprot:P18858 |
| Uniprot | P18858 |
| Formulation | Rabbit IgG in phosphate buffered saline , pH 7.4, 150mM NaCl, 0.02% sodium azide and 50% glycerol. |
| Storage | Store at +4°C short term. Store at -20°C long term. Avoid freeze / thaw cycle. |

Application Details

WB 1:500~1:2000 IHC 1:50~1:200 ICC/IF 1:50~1:200

Images



Western blot analysis of DNA Ligase I expression in Molt4 cell lysate.

Product Description

DNA ligase that seals nicks in double-stranded DNA during DNA replication, DNA recombination and DNA repair.

Background

DNA ligase that seals nicks in double-stranded DNA during DNA replication, DNA recombination and DNA repair.

Note: This product is for in vitro research use only