

## ERp29 Rabbit mAb

Catalog No: #59702

Package Size: #59702-1 50ul #59702-2 100ul

Orders: order@signalwayantibody.com

Support: tech@signalwayantibody.com

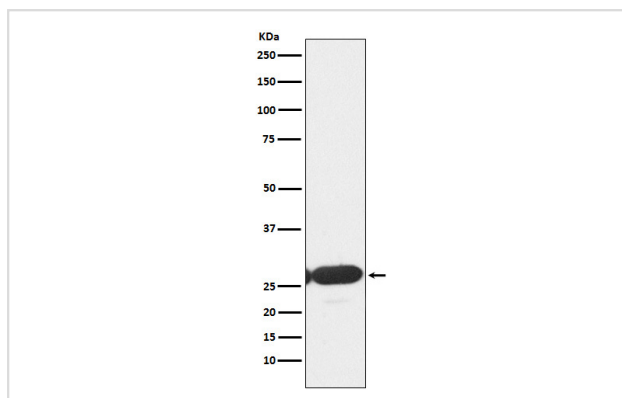
## Description

Product Name	ERp29 Rabbit mAb
Host Species	Rabbit
Clonality	Monoclonal
Isotype	Rabbit IgG
Purification	Affinity-chromatography
Applications	WB IHC ICC/IF
Species Reactivity	Human Mouse Rat
Specificity	ERp29 Antibody detects endogenous levels of total ERp29
Immunogen Description	A synthesized peptide derived from human ERp29
Other Names	ERp28; ERP29_HUMAN; ERp31; HEL S 107; PDI-DB; PDIA9;
Accession No.	Uniprot:P30040
Uniprot	P30040
Formulation	Rabbit IgG in phosphate buffered saline , pH 7.4, 150mM NaCl, 0.02% sodium azide and 50% glycerol.
Storage	Store at +4°C short term. Store at -20°C long term. Avoid freeze / thaw cycle.

## Application Details

WB 1:500~1:2000 IHC 1:50~1:200 ICC/IF 1:50~1:200

## Images



Western blot analysis of ERp29 expression in HepG2 cell lysate.

## Product Description

Proper protein folding and post-translational modifications are essential for secretory protein export out of the endoplasmic reticulum. This task is accomplished by chaperone proteins such as protein disulfide isomerase (PDI), GRP94, and BiP.

## Background

---

Proper protein folding and post-translational modifications are essential for secretory protein export out of the endoplasmic reticulum. This task is accomplished by chaperone proteins such as protein disulfide isomerase (PDI), GRP94, and BiP.

---

Note: This product is for in vitro research use only