

## SET Rabbit mAb

Catalog No: #59709

Package Size: #59709-1 50ul #59709-2 100ul

Orders: order@signalwayantibody.com

Support: tech@signalwayantibody.com

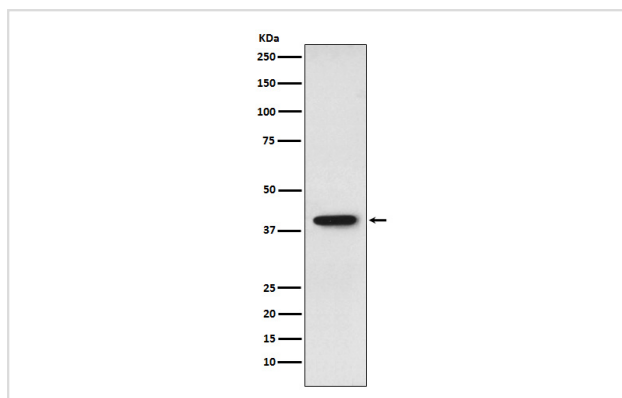
## Description

Product Name	SET Rabbit mAb
Host Species	Rabbit
Clonality	Monoclonal
Isotype	Rabbit IgG
Purification	Affinity-chromatography
Applications	WB IHC ICC/IF IP FC
Species Reactivity	Human Mouse Rat
Specificity	SET Antibody detects endogenous levels of total SET
Immunogen Description	A synthesized peptide derived from human SET
Other Names	2PP2A; I2PP2A; IGAAD; IPP2A2; PHAPII; Set; TAF IBETA; TAFI;
Accession No.	Uniprot:Q01105
Uniprot	Q01105
Formulation	Rabbit IgG in phosphate buffered saline , pH 7.4, 150mM NaCl, 0.02% sodium azide and 50% glycerol.
Storage	Store at +4°C short term. Store at -20°C long term. Avoid freeze / thaw cycle.

## Application Details

WB 1:1000~1:5000 IHC 1:50~1:200 ICC/IF 1:100~1:500 IP 1:30 FC 1:20

## Images



Western blot analysis of SET expression in HepG2 cell lysate.

## Product Description

Multitasking protein, involved in apoptosis, transcription, nucleosome assembly and histone binding. Isoform 2 anti-apoptotic activity is mediated by inhibition of the GZMA-activated DNase, NME1.

## Background

---

Multitasking protein, involved in apoptosis, transcription, nucleosome assembly and histone binding. Isoform 2 anti-apoptotic activity is mediated by inhibition of the GZMA-activated DNase, NME1.

---

Note: This product is for in vitro research use only