

Nuf2 Rabbit mAb

Catalog No: #59710

Package Size: #59710-1 50ul #59710-2 100ul

Orders: order@signalwayantibody.com

Support: tech@signalwayantibody.com

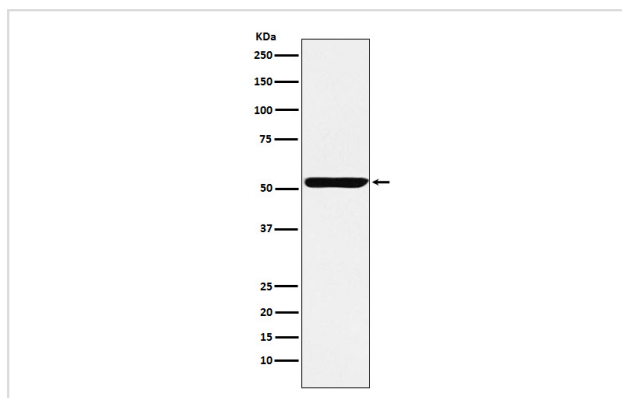
Description

Product Name	Nuf2 Rabbit mAb
Host Species	Rabbit
Clonality	Monoclonal
Isotype	Rabbit IgG
Purification	Affinity-chromatography
Applications	WB ICC/IF FC
Species Reactivity	Human
Specificity	Nuf2 Antibody detects endogenous levels of total Nuf2
Immunogen Description	A synthesized peptide derived from human Nuf2
Other Names	CDCA1; CT106; hNuf2; hNuf2R; hsNuf2; NUF2; NUF2R;
Accession No.	Uniprot:Q9BZD4
Uniprot	Q9BZD4
Formulation	Rabbit IgG in phosphate buffered saline , pH 7.4, 150mM NaCl, 0.02% sodium azide and 50% glycerol.
Storage	Store at +4°C short term. Store at -20°C long term. Avoid freeze / thaw cycle.

Application Details

WB 1:500~1:2000 ICC/IF 1:100~1:500 FC 1:50

Images



Western blot analysis of Nuf2 expression in HeLa cell lysate.

Product Description

Acts as a component of the essential kinetochore-associated NDC80 complex, which is required for chromosome segregation and spindle checkpoint activity. Required for kinetochore integrity and the organization of stable microtubule binding sites in the outer plate of the kinetochore.

Background

Acts as a component of the essential kinetochore-associated NDC80 complex, which is required for chromosome segregation and spindle checkpoint activity. Required for kinetochore integrity and the organization of stable microtubule binding sites in the outer plate of the kinetochore.

Note: This product is for in vitro research use only