

SAMHD1 Rabbit mAb

Catalog No: #59711

Package Size: #59711-1 50ul #59711-2 100ul

Orders: order@signalwayantibody.com

Support: tech@signalwayantibody.com

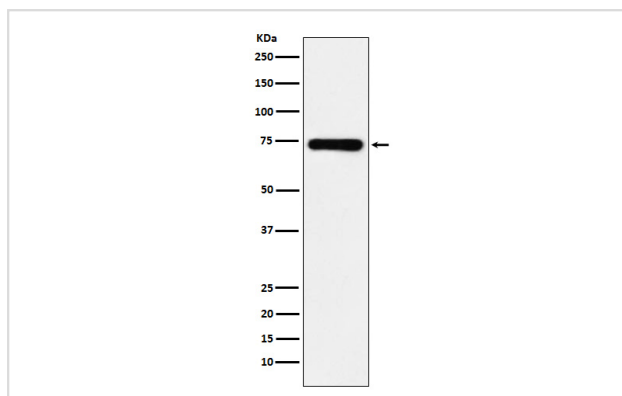
Description

Product Name	SAMHD1 Rabbit mAb
Host Species	Rabbit
Clonality	Monoclonal
Isotype	Rabbit IgG
Purification	Affinity-chromatography
Applications	WB IHC ICC/IF FC
Species Reactivity	Human
Specificity	SAMHD1 Antibody detects endogenous levels of total SAMHD1
Immunogen Description	A synthesized peptide derived from human SAMHD1
Other Names	SAMHD1; AGS5; CHBL2; DCIP; HDDC1; MOP-5; MOP5; SBBI88; Mg11;
Accession No.	Uniprot:Q9Y3Z3
Uniprot	Q9Y3Z3
Formulation	Rabbit IgG in phosphate buffered saline , pH 7.4, 150mM NaCl, 0.02% sodium azide and 50% glycerol.
Storage	Store at +4°C short term. Store at -20°C long term. Avoid freeze / thaw cycle.

Application Details

WB 1:1000~1:5000 IHC 1:50~1:200 ICC/IF 1:50~1:200 FC 1:50

Images



Western blot analysis of SAMHD1 expression in MCF7 cell lysate.

Product Description

Putative nuclease involved in innate immune response by acting as a negative regulator of the cell-intrinsic antiviral response. May play a role in mediating proinflammatory responses to TNF-alpha signaling.

Background

Putative nuclease involved in innate immune response by acting as a negative regulator of the cell-intrinsic antiviral response. May play a role in mediating proinflammatory responses to TNF-alpha signaling.

Note: This product is for in vitro research use only