

Mast Cell Chymase Rabbit mAb

Catalog No: #59713

Package Size: #59713-1 50ul #59713-2 100ul

Orders: order@signalwayantibody.com

Support: tech@signalwayantibody.com

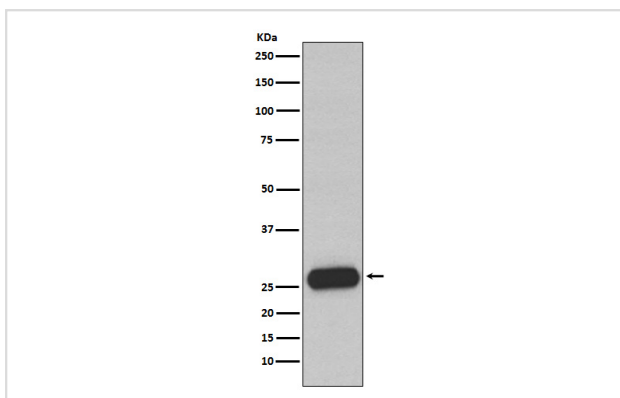
Description

Product Name	Mast Cell Chymase Rabbit mAb
Host Species	Rabbit
Clonality	Monoclonal
Isotype	Rabbit IgG
Purification	Affinity-chromatography
Applications	WB IHC
Species Reactivity	Human
Specificity	Mast Cell Chymase Antibody detects endogenous levels of total Mast Cell Chymase
Immunogen Description	A synthesized peptide derived from human Mast Cell Chymase
Other Names	Chymase 1; Chymase; CMA1; CYH; CYM; Mcp-5; MCP3P; Mcpt5; MCT1; MMCP-5;
Accession No.	Uniprot:P23946
Uniprot	P23946
Formulation	Rabbit IgG in phosphate buffered saline , pH 7.4, 150mM NaCl, 0.02% sodium azide and 50% glycerol.
Storage	Store at +4°C short term. Store at -20°C long term. Avoid freeze / thaw cycle.

Application Details

WB 1:1000~1:5000 IHC 1:50~1:200

Images



Western blot analysis of Mast Cell Chymase expression in Human small intestine lysate.

Product Description

Major secreted protease of mast cells with suspected roles in vasoactive peptide generation, extracellular matrix degradation, and regulation of gland secretion.

Background

Major secreted protease of mast cells with suspected roles in vasoactive peptide generation, extracellular matrix degradation, and regulation of gland secretion.

Note: This product is for in vitro research use only