

SEC23 Rabbit mAb

Catalog No: #59714

Package Size: #59714-1 50ul #59714-2 100ul

Orders: order@signalwayantibody.com

Support: tech@signalwayantibody.com

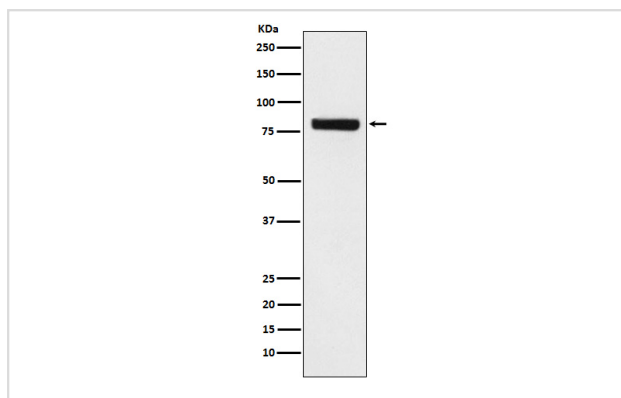
Description

Product Name	SEC23 Rabbit mAb
Host Species	Rabbit
Clonality	Monoclonal
Isotype	Rabbit IgG
Purification	Affinity-chromatography
Applications	WB FC
Species Reactivity	Human
Specificity	SEC23 Antibody detects endogenous levels of total SEC23
Immunogen Description	A synthesized peptide derived from human SEC23
Other Names	CLSD; sec23a;
Accession No.	Uniprot:Q15436
Uniprot	Q15436
Formulation	Rabbit IgG in phosphate buffered saline , pH 7.4, 150mM NaCl, 0.02% sodium azide and 50% glycerol.
Storage	Store at +4°C short term. Store at -20°C long term. Avoid freeze / thaw cycle.

Application Details

WB 1:1000~1:5000 FC 1:50

Images



Western blot analysis of SEC23 expression in HeLa cell lysate.

Product Description

Component of the COPII coat, that covers ER-derived vesicles involved in transport from the endoplasmic reticulum to the Golgi apparatus.

Background

Component of the COPII coat, that covers ER-derived vesicles involved in transport from the endoplasmic reticulum to the Golgi apparatus.

Note: This product is for in vitro research use only