

Wnt2b Rabbit mAb

Catalog No: #59715

Package Size: #59715-1 50ul #59715-2 100ul

Orders: order@signalwayantibody.com

Support: tech@signalwayantibody.com

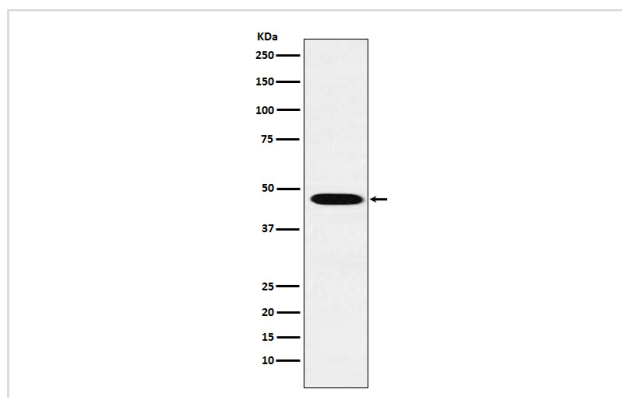
Description

| | |
|-----------------------|--|
| Product Name | Wnt2b Rabbit mAb |
| Host Species | Rabbit |
| Clonality | Monoclonal |
| Isotype | Rabbit IgG |
| Purification | Affinity-chromatography |
| Applications | WB ICC/IF FC |
| Species Reactivity | Human Mouse Rat |
| Specificity | Wnt2b Antibody detects endogenous levels of total Wnt2b |
| Immunogen Description | A synthesized peptide derived from human Wnt2b |
| Other Names | WNT13; Wnt2b; XWNT2; |
| Accession No. | Uniprot:Q93097 |
| Uniprot | Q93097 |
| Formulation | Rabbit IgG in phosphate buffered saline , pH 7.4, 150mM NaCl, 0.02% sodium azide and 50% glycerol. |
| Storage | Store at +4°C short term. Store at -20°C long term. Avoid freeze / thaw cycle. |

Application Details

WB 1:500~1:2000 ICC/IF 1:50~1:200 FC 1:50

Images



Western blot analysis of Wnt2b expression in HepG2 cell lysate.

Product Description

Ligand for members of the frizzled family of seven transmembrane receptors. Probable developmental protein. May be a signaling molecule which affects the development of discrete regions of tissues. Is likely to signal over only few cell diameters.

Background

Ligand for members of the frizzled family of seven transmembrane receptors. Probable developmental protein. May be a signaling molecule which affects the development of discrete regions of tissues. Is likely to signal over only few cell diameters.

Note: This product is for in vitro research use only