

## VPS26 Rabbit mAb

Catalog No: #59716

Package Size: #59716-1 50ul #59716-2 100ul

Orders: order@signalwayantibody.com

Support: tech@signalwayantibody.com

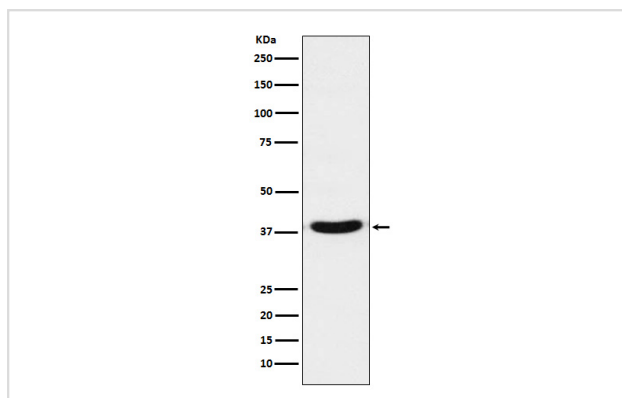
## Description

Product Name	VPS26 Rabbit mAb
Host Species	Rabbit
Clonality	Monoclonal
Isotype	Rabbit IgG
Purification	Affinity-chromatography
Applications	WB ICC/IF IP
Species Reactivity	Human Mouse Rat
Specificity	VPS26 Antibody detects endogenous levels of total VPS26
Immunogen Description	A synthesized peptide derived from human VPS26
Other Names	HB58; Hbeta58; hVPS26; PEP8A; VPS 26; VPS26A;
Accession No.	Uniprot:O75436
Uniprot	O75436
Formulation	Rabbit IgG in phosphate buffered saline , pH 7.4, 150mM NaCl, 0.02% sodium azide and 50% glycerol.
Storage	Store at +4°C short term. Store at -20°C long term. Avoid freeze / thaw cycle.

## Application Details

WB 1:500~1:2000 ICC/IF 1:50~1:200 IP 1:50

## Images



Western blot analysis of VPS26 expression in A431 cell lysate.

## Product Description

Essential component of the retromer complex, a complex required to retrieve lysosomal enzyme receptors (IGF2R and M6PR) from endosomes to the trans-Golgi network. Also required to regulate transcytosis of the polymeric immunoglobulin receptor (pIgR-pIgA).

## Background

---

Essential component of the retromer complex, a complex required to retrieve lysosomal enzyme receptors (IGF2R and M6PR) from endosomes to the trans-Golgi network. Also required to regulate transcytosis of the polymeric immunoglobulin receptor (pIgR-pIgA).

---

Note: This product is for in vitro research use only