

NPHS2 Rabbit mAb

Catalog No: #59726

Package Size: #59726-1 50ul #59726-2 100ul

Orders: order@signalwayantibody.com

Support: tech@signalwayantibody.com

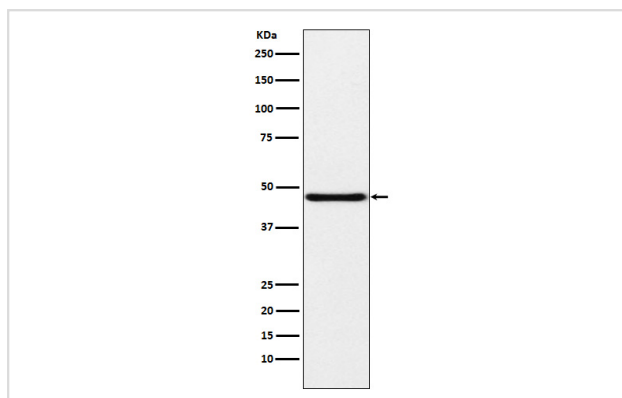
Description

Product Name	NPHS2 Rabbit mAb
Host Species	Rabbit
Clonality	Monoclonal
Isotype	Rabbit IgG
Purification	Affinity-chromatography
Applications	WB IHC
Species Reactivity	Human Mouse Rat
Specificity	NPHS2 Antibody detects endogenous levels of total NPHS2
Immunogen Description	A synthesized peptide derived from human NPHS2
Other Names	NPHS2; PDCN; Podocin; SRN1;
Accession No.	Uniprot:Q9NP85
Uniprot	Q9NP85
Formulation	Rabbit IgG in phosphate buffered saline , pH 7.4, 150mM NaCl, 0.02% sodium azide and 50% glycerol.
Storage	Store at +4°C short term. Store at -20°C long term. Avoid freeze / thaw cycle.

Application Details

WB 1:500~1:2000 IHC 1:50~1:200

Images



Western blot analysis of NPHS2 expression in Human fetal kidney lysate.

Product Description

Plays a role in the regulation of glomerular permeability, acting probably as a linker between the plasma membrane and the cytoskeleton.

Background

Plays a role in the regulation of glomerular permeability, acting probably as a linker between the plasma membrane and the cytoskeleton.

Note: This product is for in vitro research use only