

Nesprin 1 Rabbit mAb

Catalog No: #59729

Package Size: #59729-1 50ul #59729-2 100ul

Orders: order@signalwayantibody.comSupport: tech@signalwayantibody.com

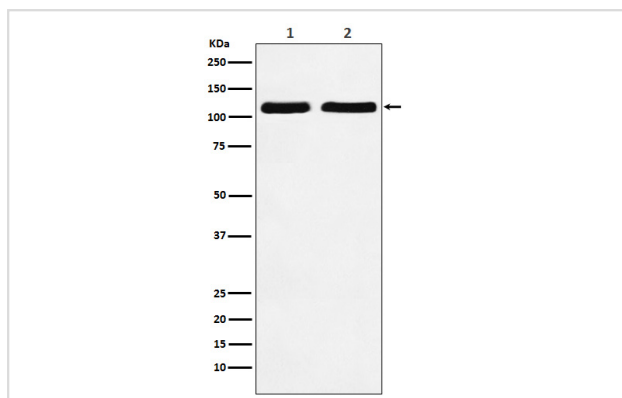
Description

Product Name	Nesprin 1 Rabbit mAb
Host Species	Rabbit
Clonality	Monoclonal
Isotype	Rabbit IgG
Purification	Affinity-chromatography
Applications	WB IHC ICC/IF FC
Species Reactivity	Human Mouse Rat
Specificity	Nesprin 1 Antibody detects endogenous levels of total Nesprin 1
Immunogen Description	A synthesized peptide derived from human Nesprin 1
Other Names	ARCA1; C6orf98; CPG2; EDMD4; Enaptin; Myne-1; MYNE1; Nesp1; Nesprin-1; SCAR8; Syne-1; SYNE1;
Accession No.	Uniprot:Q8NF91
Uniprot	Q8NF91
Formulation	Rabbit IgG in phosphate buffered saline , pH 7.4, 150mM NaCl, 0.02% sodium azide and 50% glycerol.
Storage	Store at +4°C short term. Store at -20°C long term. Avoid freeze / thaw cycle.

Application Details

WB 1:500~1:2000 IHC 1:50~1:200 ICC/IF 1:50~1:200 FC 1:50

Images



Western blot analysis of Nesprin 1 expression in (1) HeLa cell lysate; (2) RAW264.7 cell lysate.

Product Description

Multi-isomeric modular protein which forms a linking network between organelles and the actin cytoskeleton to maintain the subcellular spatial organization. Component of SUN-protein-containing multivariate complexes also called LINC complexes which link the nucleoskeleton and cytoskeleton by providing versatile outer nuclear membrane attachment sites for cytoskeletal filaments.

Background

Multi-isomeric modular protein which forms a linking network between organelles and the actin cytoskeleton to maintain the subcellular spatial organization. Component of SUN-protein-containing multivariate complexes also called LINC complexes which link the nucleoskeleton and cytoskeleton by providing versatile outer nuclear membrane attachment sites for cytoskeletal filaments.

Note: This product is for in vitro research use only