

E1 Ubiquitin Activating Enzyme Rabbit mAb

Catalog No: #59730

Package Size: #59730-1 50ul #59730-2 100ul

Orders: order@signalwayantibody.com

Support: tech@signalwayantibody.com

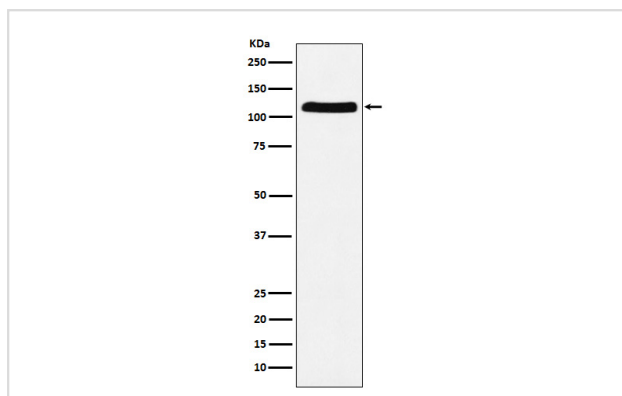
Description

Product Name	E1 Ubiquitin Activating Enzyme Rabbit mAb
Host Species	Rabbit
Clonality	Monoclonal
Isotype	Rabbit IgG
Purification	Affinity-chromatography
Applications	WB IHC ICC/IF FC
Species Reactivity	Human Mouse Rat
Specificity	E1 Ubiquitin Activating Enzyme Antibody detects endogenous levels of total E1 Ubiquitin Activating Enzyme
Immunogen Description	A synthesized peptide derived from human E1 Ubiquitin Activating Enzyme
Other Names	A1S9; A1S9T; A1ST; AMCX1; CFAP124; GXP1; POC20; SMAX2; Uba1; UBA1A; UBE1; UBE1X;
Accession No.	Uniprot:P22314
Uniprot	P22314
Formulation	Rabbit IgG in phosphate buffered saline , pH 7.4, 150mM NaCl, 0.02% sodium azide and 50% glycerol.
Storage	Store at +4°C short term. Store at -20°C long term. Avoid freeze / thaw cycle.

Application Details

WB 1:500~1:2000 IHC 1:50~1:200 ICC/IF 1:50~1:200 FC 1:50

Images



Western blot analysis of E1 Ubiquitin Activating Enzyme expression in HeLa cell lysate.

Product Description

Activates ubiquitin by first adenylating its C-terminal glycine residue with ATP, and thereafter linking this residue to the side chain of a cysteine residue in E1, yielding an ubiquitin-E1 thioester and free AMP.

Background

Activates ubiquitin by first adenylating its C-terminal glycine residue with ATP, and thereafter linking this residue to the side chain of a cysteine residue in E1, yielding an ubiquitin-E1 thioester and free AMP.

Note: This product is for in vitro research use only