

Band 3 / CD233 Rabbit mAb

Catalog No: #59731

Package Size: #59731-1 50ul #59731-2 100ul

Orders: order@signalwayantibody.com

Support: tech@signalwayantibody.com

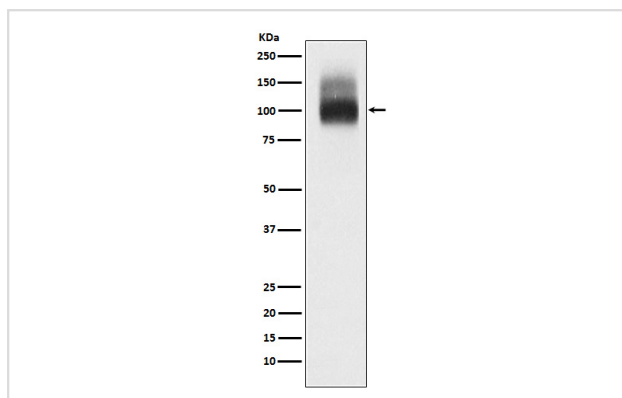
Description

Product Name	Band 3 / CD233 Rabbit mAb
Host Species	Rabbit
Clonality	Monoclonal
Isotype	Rabbit IgG
Purification	Affinity-chromatography
Applications	WB IHC ICC/IF
Species Reactivity	Human
Specificity	Band 3 / CD233 Antibody detects endogenous levels of total Band 3 / CD233
Immunogen Description	A synthesized peptide derived from human Band 3 / CD233
Other Names	AE1; BND3; CD233; DI; EMPB3; EPB3; FR; RTA1A; SLC4A1; SW; WD; WD1; WR;
Accession No.	Uniprot:P02730
Uniprot	P02730
Formulation	Rabbit IgG in phosphate buffered saline , pH 7.4, 150mM NaCl, 0.02% sodium azide and 50% glycerol.
Storage	Store at +4°C short term. Store at -20°C long term. Avoid freeze / thaw cycle.

Application Details

WB 1:500~1:2000 IHC 1:50~1:200 ICC/IF 1:50~1:200

Images



Western blot analysis of Band 3 / CD233 expression in Red blood cell lysate.

Product Description

Functions both as a transporter that mediates electroneutral anion exchange across the cell membrane and as a structural protein. Major integral membrane glycoprotein of the erythrocyte membrane; required for normal flexibility and stability of the erythrocyte membrane and for normal erythrocyte shape via the interactions of its cytoplasmic domain with cytoskeletal proteins, glycolytic enzymes, and hemoglobin.

Background

Functions both as a transporter that mediates electroneutral anion exchange across the cell membrane and as a structural protein. Major integral membrane glycoprotein of the erythrocyte membrane; required for normal flexibility and stability of the erythrocyte membrane and for normal erythrocyte shape via the interactions of its cytoplasmic domain with cytoskeletal proteins, glycolytic enzymes, and hemoglobin.

Note: This product is for in vitro research use only