

eIF4A3 Rabbit mAb

Catalog No: #59732

Package Size: #59732-1 50ul #59732-2 100ul

Orders: order@signalwayantibody.com

Support: tech@signalwayantibody.com

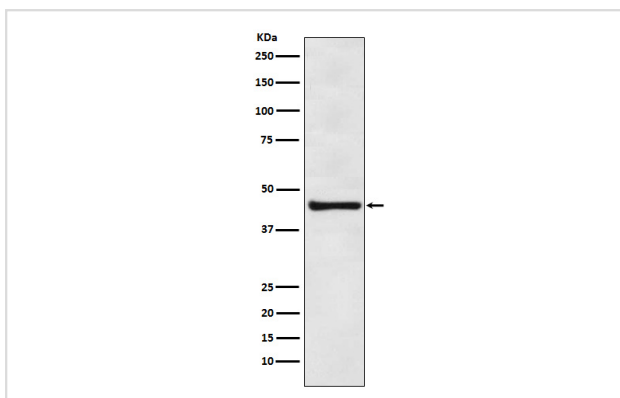
Description

Product Name	eIF4A3 Rabbit mAb
Host Species	Rabbit
Clonality	Monoclonal
Isotype	Rabbit IgG
Purification	Affinity-chromatography
Applications	WB IHC ICC/IF IP FC
Species Reactivity	Human Mouse Rat
Specificity	eIF4A3 Antibody detects endogenous levels of total eIF4A3
Immunogen Description	A synthesized peptide derived from human eIF4A3
Other Names	DDX48; EIF4A3; eIF4AIII; hNMP 265; NMP 265; NMP265; NUK34;
Accession No.	Uniprot:P38919
Uniprot	P38919
Formulation	Rabbit IgG in phosphate buffered saline , pH 7.4, 150mM NaCl, 0.02% sodium azide and 50% glycerol.
Storage	Store at +4°C short term. Store at -20°C long term. Avoid freeze / thaw cycle.

Application Details

WB 1:500~1:2000 IHC 1:50~1:200 ICC/IF 1:50~1:200 IP 1:40 FC 1:100

Images



Western blot analysis of eIF4A3 expression in HeLa cell treated with NFDN.

Product Description

ATP-dependent RNA helicase. Component of a splicing-dependent multiprotein exon junction complex (EJC) deposited at splice junction on mRNAs. The EJC is a dynamic structure consisting of a few core proteins and several more peripheral nuclear and cytoplasmic associated factors that join the complex only transiently either during EJC assembly or during subsequent mRNA metabolism.

Background

ATP-dependent RNA helicase. Component of a splicing-dependent multiprotein exon junction complex (EJC) deposited at splice junction on mRNAs. The EJC is a dynamic structure consisting of a few core proteins and several more peripheral nuclear and cytoplasmic associated factors that join the complex only transiently either during EJC assembly or during subsequent mRNA metabolism.

Note: This product is for in vitro research use only