

## PSMB8 / LMP7 Rabbit mAb

Catalog No: #59734

Package Size: #59734-1 50ul #59734-2 100ul

Orders: order@signalwayantibody.com

Support: tech@signalwayantibody.com

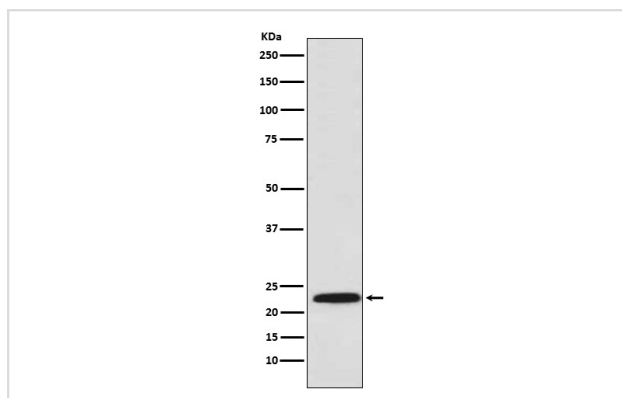
## Description

Product Name	PSMB8 / LMP7 Rabbit mAb
Host Species	Rabbit
Clonality	Monoclonal
Isotype	Rabbit IgG
Purification	Affinity-chromatography
Applications	WB IHC ICC/IF IP FC
Species Reactivity	Human Mouse Rat
Specificity	Proteasome 20S LMP7 Antibody detects endogenous levels of total Proteasome 20S LMP7
Immunogen Description	A synthesized peptide derived from human Proteasome 20S LMP7
Other Names	JMP; LMP7; D6S216; PSMB5i; PSMB8; RING10; D6S216E;
Accession No.	Uniprot:P28062
Uniprot	P28062
Formulation	Rabbit IgG in phosphate buffered saline , pH 7.4, 150mM NaCl, 0.02% sodium azide and 50% glycerol.
Storage	Store at +4°C short term. Store at -20°C long term. Avoid freeze / thaw cycle.

## Application Details

WB 1:1000~1:5000 IHC 1:50~1:200 ICC/IF 1:50~1:200 IP 1:50 FC 1:100

## Images



Western blot analysis of Proteasome 20S LMP7 expression in U937 cell lysate.

## Product Description

The proteasome is a multicatalytic proteinase complex which is characterized by its ability to cleave peptides with Arg, Phe, Tyr, Leu, and Glu adjacent to the leaving group at neutral or slightly basic pH. The proteasome has an ATP-dependent proteolytic activity.

## Background

---

The proteasome is a multicatalytic proteinase complex which is characterized by its ability to cleave peptides with Arg, Phe, Tyr, Leu, and Glu adjacent to the leaving group at neutral or slightly basic pH. The proteasome has an ATP-dependent proteolytic activity.

---

Note: This product is for in vitro research use only