

Syntrophin alpha 1 Rabbit mAb

Catalog No: #59739

Package Size: #59739-1 50ul #59739-2 100ul

Orders: order@signalwayantibody.com

Support: tech@signalwayantibody.com

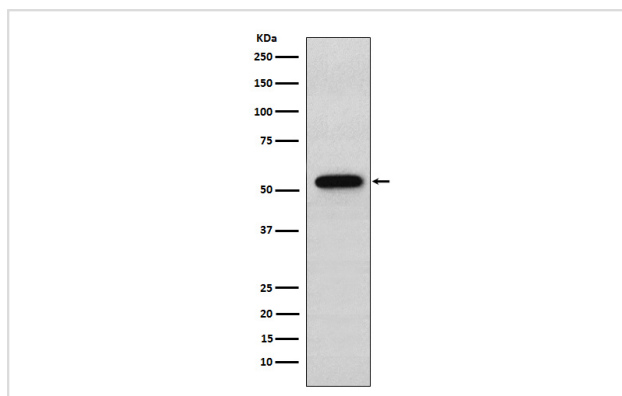
Description

Product Name	Syntrophin alpha 1 Rabbit mAb
Host Species	Rabbit
Clonality	Monoclonal
Isotype	Rabbit IgG
Purification	Affinity-chromatography
Applications	WB IHC ICC/IF FC
Species Reactivity	Human Mouse
Specificity	Syntrophin alpha 1 Antibody detects endogenous levels of total Syntrophin alpha 1
Immunogen Description	A synthesized peptide derived from human Syntrophin alpha 1
Other Names	Alpha 1 syntrophin; LQT12; SNT1; Snta1; Syntrophin 1; TACIP1;
Accession No.	Uniprot:Q13424
Uniprot	Q13424
Formulation	Rabbit IgG in phosphate buffered saline , pH 7.4, 150mM NaCl, 0.02% sodium azide and 50% glycerol.
Storage	Store at +4°C short term. Store at -20°C long term. Avoid freeze / thaw cycle.

Application Details

WB 1:500~1:2000 IHC 1:50~1:200 ICC/IF 1:50~1:200 FC 1:100

Images



Western blot analysis of Syntrophin alpha 1 expression in A549 cell lysate.

Product Description

Adapter protein that binds to and probably organizes the subcellular localization of a variety of membrane proteins. May link various receptors to the actin cytoskeleton and the extracellular matrix via the dystrophin glycoprotein complex.

Background

Adapter protein that binds to and probably organizes the subcellular localization of a variety of membrane proteins. May link various receptors to the actin cytoskeleton and the extracellular matrix via the dystrophin glycoprotein complex.

Note: This product is for in vitro research use only