

PKC theta Rabbit mAb

Catalog No: #59740

Package Size: #59740-1 50ul #59740-2 100ul

Orders: order@signalwayantibody.com

Support: tech@signalwayantibody.com

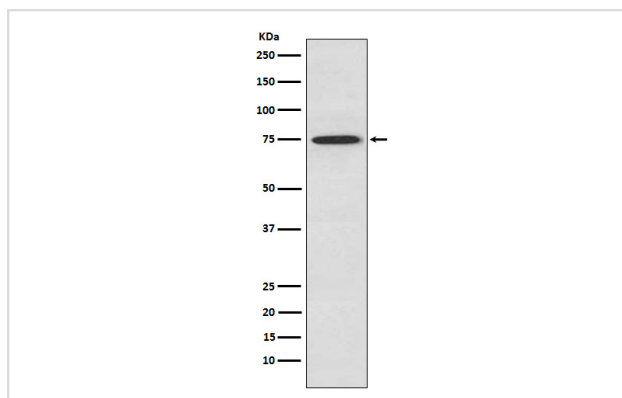
Description

Product Name	PKC theta Rabbit mAb
Host Species	Rabbit
Clonality	Monoclonal
Isotype	Rabbit IgG
Purification	Affinity-chromatography
Applications	WB
Species Reactivity	Human Mouse Rat
Specificity	PKC theta Antibody detects endogenous levels of total PKC theta
Immunogen Description	A synthesized peptide derived from human PKC theta
Other Names	nPKC theta; nPKCtheta; PKC0; Prkcq; PRKCT;
Accession No.	Uniprot:Q04759
Uniprot	Q04759
Formulation	Rabbit IgG in phosphate buffered saline , pH 7.4, 150mM NaCl, 0.02% sodium azide and 50% glycerol.
Storage	Store at +4°C short term. Store at -20°C long term. Avoid freeze / thaw cycle.

Application Details

WB 1:500~1:2000

Images



Western blot analysis of PKC theta expression in Jurkat cell lysate.

Product Description

This is a calcium-independent, phospholipid-dependent, serine- and threonine-specific enzyme. Essential for T-cell receptor (TCR)-mediated T-cell activation, but is dispensable during TCR-dependent thymocyte development.

Background

This is a calcium-independent, phospholipid-dependent, serine- and threonine-specific enzyme. Essential for T-cell receptor (TCR)-mediated T-cell activation, but is dispensable during TCR-dependent thymocyte development.

Note: This product is for in vitro research use only