

## CYP1B1 Rabbit mAb

Catalog No: #59742

Package Size: #59742-1 50ul #59742-2 100ul

Orders: order@signalwayantibody.com

Support: tech@signalwayantibody.com

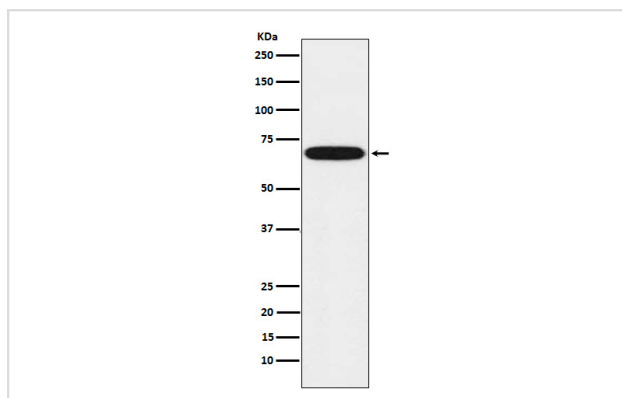
## Description

Product Name	CYP1B1 Rabbit mAb
Host Species	Rabbit
Clonality	Monoclonal
Isotype	Rabbit IgG
Purification	Affinity-chromatography
Applications	WB IHC FC
Species Reactivity	Human Mouse Rat
Specificity	CYP1B1 Antibody detects endogenous levels of total CYP1B1
Immunogen Description	A synthesized peptide derived from human CYP1B1
Other Names	CP1B; Cyp1b1; CYP1B1; Cytochrome P450 1B1; GLC3A; P4501B1;
Accession No.	Uniprot:Q16678
Uniprot	Q16678
Formulation	Rabbit IgG in phosphate buffered saline , pH 7.4, 150mM NaCl, 0.02% sodium azide and 50% glycerol.
Storage	Store at +4°C short term. Store at -20°C long term. Avoid freeze / thaw cycle.

## Application Details

WB 1:500~1:2000 IHC 1:50~1:200 FC 1:100

## Images



Western blot analysis of CYP1B1 expression in Human fetal kidney lysate.

## Product Description

Cytochromes P450 are a group of heme-thiolate monooxygenases. In liver microsomes, this enzyme is involved in an NADPH-dependent electron transport pathway. It oxidizes a variety of structurally unrelated compounds, including steroids, fatty acids, and xenobiotics.

## Background

---

Cytochromes P450 are a group of heme-thiolate monooxygenases. In liver microsomes, this enzyme is involved in an NADPH-dependent electron transport pathway. It oxidizes a variety of structurally unrelated compounds, including steroids, fatty acids, and xenobiotics.

---

Note: This product is for in vitro research use only