

TREX1 Rabbit mAb

Catalog No: #59743

Package Size: #59743-1 50ul #59743-2 100ul

Orders: order@signalwayantibody.com

Support: tech@signalwayantibody.com

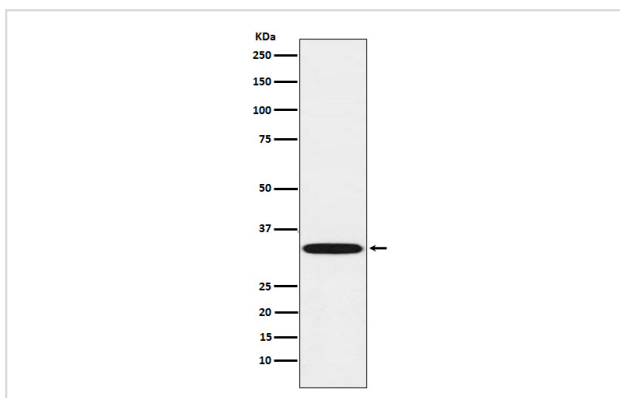
Description

Product Name	TREX1 Rabbit mAb
Host Species	Rabbit
Clonality	Monoclonal
Isotype	Rabbit IgG
Purification	Affinity-chromatography
Applications	WB IHC ICC/IF
Species Reactivity	Human
Specificity	TREX1 Antibody detects endogenous levels of total TREX1
Immunogen Description	A synthesized peptide derived from human TREX1
Other Names	AGS1; AGS5; CRV; DNase III; DRN3; HERNS; TREX1;
Accession No.	Uniprot:Q9NSU2
Uniprot	Q9NSU2
Formulation	Rabbit IgG in phosphate buffered saline , pH 7.4, 150mM NaCl, 0.02% sodium azide and 50% glycerol.
Storage	Store at +4°C short term. Store at -20°C long term. Avoid freeze / thaw cycle.

Application Details

WB 1:500~1:2000 IHC 1:50~1:200 ICC/IF 1:50~1:200

Images



Western blot analysis of TREX1 expression in Daudi cell lysate.

Product Description

TREX1 is the major 3'->5' DNA exonuclease in human cells. The protein is a non processive exonuclease that may serve a proofreading function for a human DNA polymerase.

Background

TREX1 is the major 3'->5' DNA exonuclease in human cells. The protein is a non processive exonuclease that may serve a proofreading function for a human DNA polymerase.

Note: This product is for in vitro research use only