

## Calsequestrin 1 Rabbit mAb

Catalog No: #59745

Package Size: #59745-1 50ul #59745-2 100ul

Orders: order@signalwayantibody.com

Support: tech@signalwayantibody.com

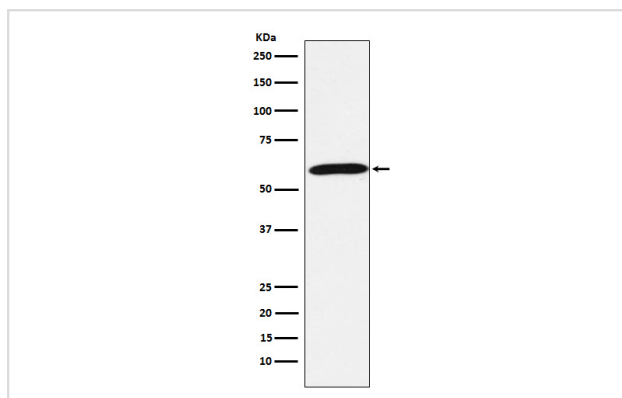
## Description

Product Name	Calsequestrin 1 Rabbit mAb
Host Species	Rabbit
Clonality	Monoclonal
Isotype	Rabbit IgG
Purification	Affinity-chromatography
Applications	WB IHC FC
Species Reactivity	Human Mouse Rat
Specificity	Calsequestrin 1 Antibody detects endogenous levels of total Calsequestrin 1
Immunogen Description	A synthesized peptide derived from human Calsequestrin 1
Other Names	Calmitin; Calmitine; Calsequestrin; Calsequestrin-1; CASQ; Casq1; PDIB1;
Accession No.	Uniprot:P31415
Uniprot	P31415
Formulation	Rabbit IgG in phosphate buffered saline , pH 7.4, 150mM NaCl, 0.02% sodium azide and 50% glycerol.
Storage	Store at +4°C short term. Store at -20°C long term. Avoid freeze / thaw cycle.

## Application Details

WB 1:1000~1:5000 IHC 1:50~1:200 FC 1:100

## Images



Western blot analysis of Calsequestrin 1 expression in Human skeletal muscle lysate.

## Product Description

Calsequestrin is a high-capacity, moderate affinity, calcium-binding protein and thus acts as an internal calcium store in muscle. The release of calcium bound to calsequestrin through a calcium release channel triggers muscle contraction. Binds 40 to 50 moles of calcium. Also binds laminin.

## Background

---

Calsequestrin is a high-capacity, moderate affinity, calcium-binding protein and thus acts as an internal calcium store in muscle. The release of calcium bound to calsequestrin through a calcium release channel triggers muscle contraction. Binds 40 to 50 moles of calcium. Also binds laminin.

---

Note: This product is for in vitro research use only