

## Emi1 Rabbit mAb

Catalog No: #59748

Package Size: #59748-1 50ul #59748-2 100ul

Orders: order@signalwayantibody.com

Support: tech@signalwayantibody.com

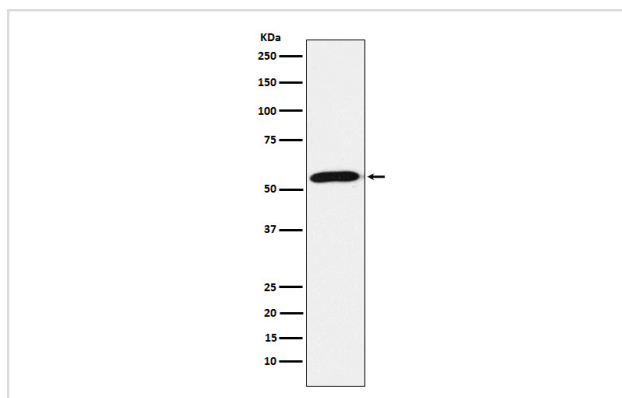
## Description

Product Name	Emi1 Rabbit mAb
Host Species	Rabbit
Clonality	Monoclonal
Isotype	Rabbit IgG
Purification	Affinity-chromatography
Applications	WB IHC ICC/IF IP
Species Reactivity	Human Mouse Rat
Specificity	Emi1 Antibody detects endogenous levels of total Emi1
Immunogen Description	A synthesized peptide derived from human Emi1
Other Names	EMI1; FBX5; Fbxo31; fbxo5;
Accession No.	Uniprot:Q9UKT4
Uniprot	Q9UKT4
Formulation	Rabbit IgG in phosphate buffered saline , pH 7.4, 150mM NaCl, 0.02% sodium azide and 50% glycerol.
Storage	Store at +4°C short term. Store at -20°C long term. Avoid freeze / thaw cycle.

## Application Details

WB 1:500~1:2000 IHC 1:50~1:200 ICC/IF 1:50~1:200 IP 1:40

## Images



Western blot analysis of Emi1 expression in HepG2 cell lysate.

## Product Description

Regulates progression through early mitosis by inhibiting the anaphase promoting complex/cyclosome (APC). Binds to the APC activators CDC20 and FZR1/CDH1 to prevent APC activation. Can also bind directly to the APC to inhibit substrate-binding.

## Background

---

Regulates progression through early mitosis by inhibiting the anaphase promoting complex/cyclosome (APC). Binds to the APC activators CDC20 and FZR1/CDH1 to prevent APC activation. Can also bind directly to the APC to inhibit substrate-binding.

---

Note: This product is for in vitro research use only