

## SAE1 Rabbit mAb

Catalog No: #59751

Package Size: #59751-1 50ul #59751-2 100ul

Orders: order@signalwayantibody.com

Support: tech@signalwayantibody.com

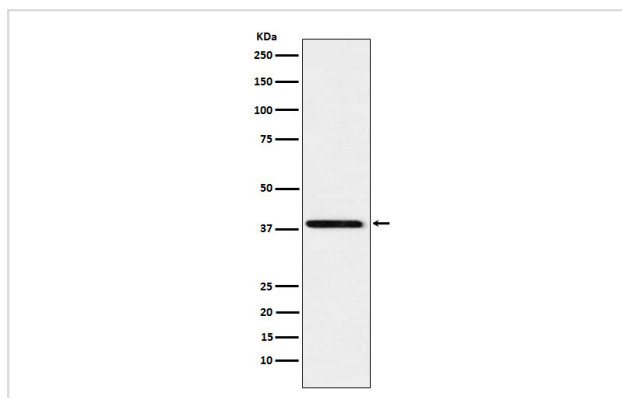
## Description

Product Name	SAE1 Rabbit mAb
Host Species	Rabbit
Clonality	Monoclonal
Isotype	Rabbit IgG
Purification	Affinity-chromatography
Applications	WB ICC/IF IP FC
Species Reactivity	Human Rat
Specificity	SAE1 Antibody detects endogenous levels of total SAE1
Immunogen Description	A synthesized peptide derived from human SAE1
Other Names	AOS1; HSPC140; Sae1; SUA1; UBLE1A;
Accession No.	Uniprot:Q9UBE0
Uniprot	Q9UBE0
Formulation	Rabbit IgG in phosphate buffered saline , pH 7.4, 150mM NaCl, 0.02% sodium azide and 50% glycerol.
Storage	Store at +4°C short term. Store at -20°C long term. Avoid freeze / thaw cycle.

## Application Details

WB 1:1000~1:5000 ICC/IF 1:50~1:200 IP 1:50 FC 1:100

## Images



Western blot analysis of SAE1 expression in Jurkat cell lysate.

## Product Description

The heterodimer acts as a E1 ligase for SUMO1, SUMO2, SUMO3, and probably SUMO4. It mediates ATP-dependent activation of SUMO proteins followed by formation of a thioester bond between a SUMO protein and a conserved active site cysteine residue on UBA2/SAE2.

## Background

---

The heterodimer acts as a E1 ligase for SUMO1, SUMO2, SUMO3, and probably SUMO4. It mediates ATP-dependent activation of SUMO proteins followed by formation of a thioester bond between a SUMO protein and a conserved active site cysteine residue on UBA2/SAE2.

---

Note: This product is for in vitro research use only