

CENPC Rabbit mAb

Catalog No: #59755

Package Size: #59755-1 50ul #59755-2 100ul

Orders: order@signalwayantibody.com

Support: tech@signalwayantibody.com

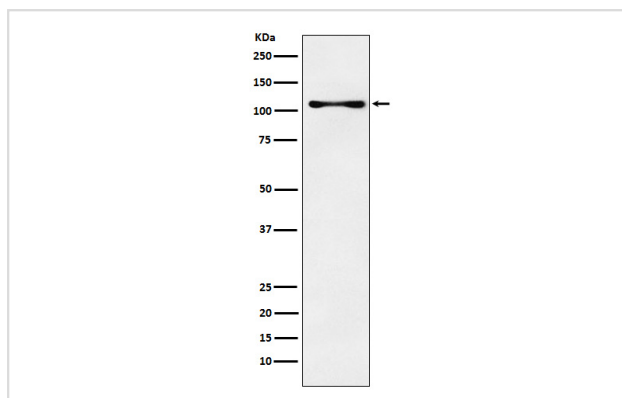
Description

Product Name	CENPC Rabbit mAb
Host Species	Rabbit
Clonality	Monoclonal
Isotype	Rabbit IgG
Purification	Affinity-chromatography
Applications	WB IHC ICC/IF IP FC
Species Reactivity	Human Mouse Rat
Specificity	CENPC Antibody detects endogenous levels of total CENPC
Immunogen Description	A synthesized peptide derived from human CENPC
Other Names	CENP-C; CENPC1; hcp-4; ICEN7; MIF2;
Accession No.	Uniprot:Q03188
Uniprot	Q03188
Formulation	Rabbit IgG in phosphate buffered saline , pH 7.4, 150mM NaCl, 0.02% sodium azide and 50% glycerol.
Storage	Store at +4°C short term. Store at -20°C long term. Avoid freeze / thaw cycle.

Application Details

WB 1:500~1:2000 IHC 1:100~1:500 ICC/IF 1:50~1:200 IP 1:50 FC 1:200

Images



Western blot analysis of CENPC expression in K562 cell lysate.

Product Description

Component of the CENPA-NAC (nucleosome-associated) complex, a complex that plays a central role in assembly of kinetochore proteins, mitotic progression and chromosome segregation.

Background

Component of the CENPA-NAC (nucleosome-associated) complex, a complex that plays a central role in assembly of kinetochore proteins, mitotic progression and chromosome segregation.

Note: This product is for in vitro research use only