

## NDUFB8 Rabbit mAb

Catalog No: #59756

Package Size: #59756-1 50ul #59756-2 100ul

Orders: order@signalwayantibody.com

Support: tech@signalwayantibody.com

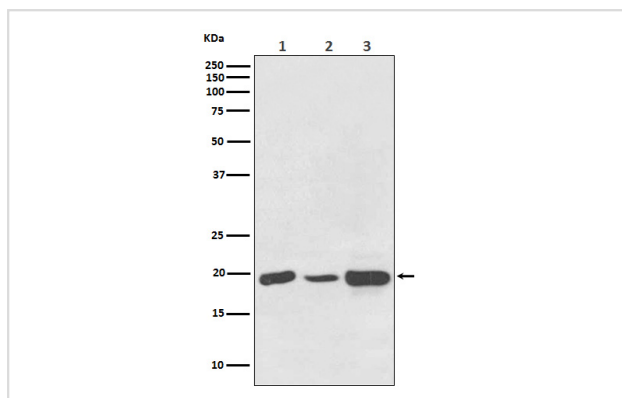
## Description

Product Name	NDUFB8 Rabbit mAb
Host Species	Rabbit
Clonality	Monoclonal
Isotype	Rabbit IgG
Purification	Affinity-chromatography
Applications	WB IHC ICC/IF IP FC
Species Reactivity	Human Mouse Rat
Specificity	NDUFB8 Antibody detects endogenous levels of total NDUFB8
Immunogen Description	A synthesized peptide derived from human NDUFB8
Other Names	ASHI; CI-ASHI; NDUFB8;
Accession No.	Uniprot:O95169
Uniprot	O95169
Formulation	Rabbit IgG in phosphate buffered saline , pH 7.4, 150mM NaCl, 0.02% sodium azide and 50% glycerol.
Storage	Store at +4°C short term. Store at -20°C long term. Avoid freeze / thaw cycle.

## Application Details

WB 1:500~1:2000 IHC 1:50~1:200 ICC/IF 1:50~1:200 IP 1:30 FC 1:50

## Images



Western blot analysis of NDUFB8 expression in (1) HeLa cell lysate; (2) NIH/3T3 cell lysate; (3) PC12 cell lysate.

## Product Description

Accessory subunit of the mitochondrial membrane respiratory chain NADH dehydrogenase (Complex I), that is believed not to be involved in catalysis. Complex I functions in the transfer of electrons from NADH to the respiratory chain. The immediate electron acceptor for the enzyme is believed to be ubiquinone.

## Background

---

Accessory subunit of the mitochondrial membrane respiratory chain NADH dehydrogenase (Complex I), that is believed not to be involved in catalysis. Complex I functions in the transfer of electrons from NADH to the respiratory chain. The immediate electron acceptor for the enzyme is believed to be ubiquinone.

---

Note: This product is for in vitro research use only