

## SIRP alpha Rabbit mAb

Catalog No: #59758

Package Size: #59758-1 50ul #59758-2 100ul

Orders: order@signalwayantibody.com

Support: tech@signalwayantibody.com

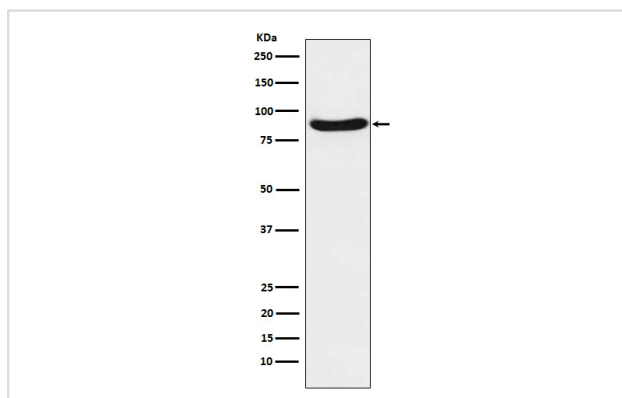
## Description

Product Name	SIRP alpha Rabbit mAb
Host Species	Rabbit
Clonality	Monoclonal
Isotype	Rabbit IgG
Purification	Affinity-chromatography
Applications	WB FC
Species Reactivity	Human Mouse Rat
Specificity	SIRP alpha Antibody detects endogenous levels of total SIRP alpha
Immunogen Description	A synthesized peptide derived from human SIRP alpha
Other Names	CD172a; MFR; MYD 1; p84; PTPNS1; SHPS1; SIRP; SIRPA; SIRPalpha; SIRPalpha1; SIRPalpha2; SIRPalpha3;
Accession No.	Uniprot:P78324
Uniprot	P78324
Formulation	Rabbit IgG in phosphate buffered saline , pH 7.4, 150mM NaCl, 0.02% sodium azide and 50% glycerol.
Storage	Store at +4°C short term. Store at -20°C long term. Avoid freeze / thaw cycle.

## Application Details

WB 1:500~1:2000 FC 1:50

## Images



Western blot analysis of SIRP alpha expression in SW480 cell lysate.

## Product Description

Immunoglobulin-like cell surface receptor for CD47. Acts as docking protein and induces translocation of PTPN6, PTPN11 and other binding partners from the cytosol to the plasma membrane. Supports adhesion of cerebellar neurons, neurite outgrowth and glial cell attachment.

## Background

---

Immunoglobulin-like cell surface receptor for CD47. Acts as docking protein and induces translocation of PTPN6, PTPN11 and other binding partners from the cytosol to the plasma membrane. Supports adhesion of cerebellar neurons, neurite outgrowth and glial cell attachment.

---

Note: This product is for in vitro research use only